

Seeking the Moral Community: Religion, Deviance, and Well- Being Among American University Students

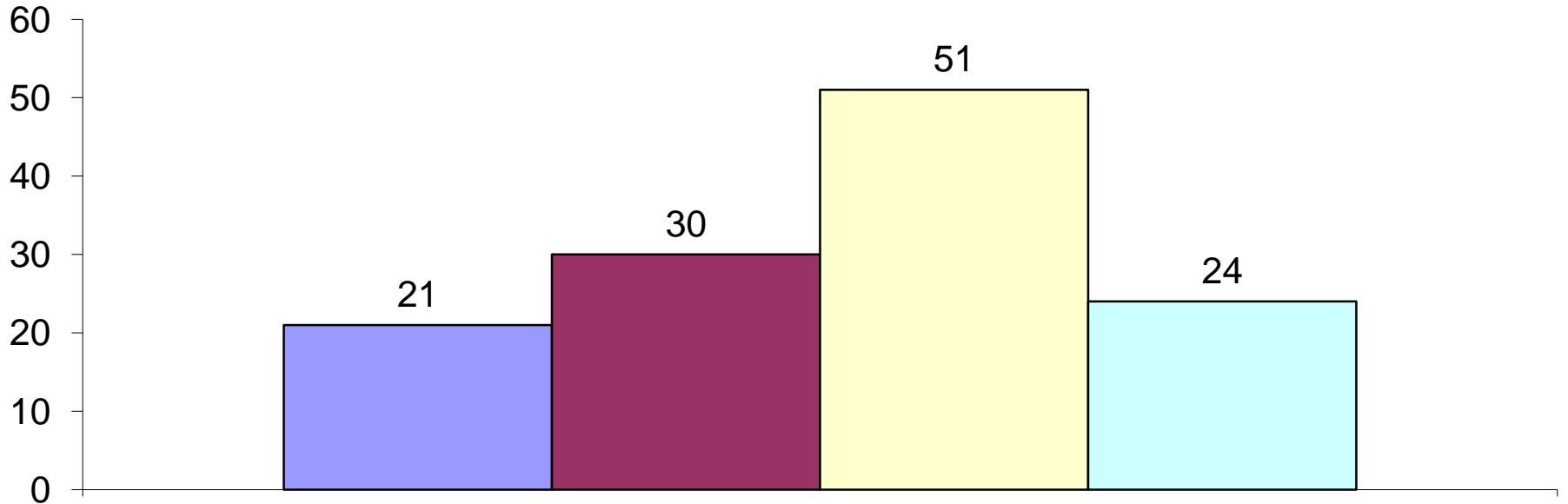
Jerome R. Koch
Alden E. Roberts
Myrna L. Armstrong
Texas Tech University

Some Preliminary Findings - Spring, 2011

The Sample:

- South State University. n=567
 - Southern Baptist University. n=531
 - Southeast Private University. n=147
 - Southeast State University. n=328
-
- 84% Ages 18-20
 - 65% White
 - 62% Female
- Total N = 1563
Response Rate = 82%

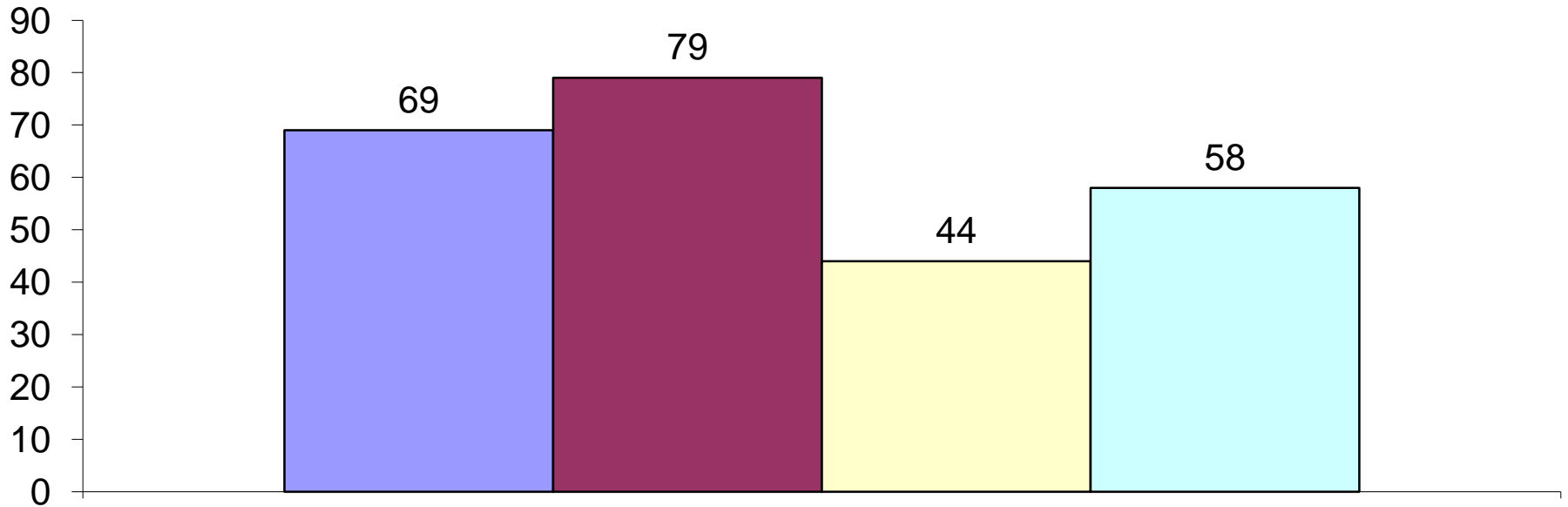
Fathers With Graduate Degree



Comparative Percentages



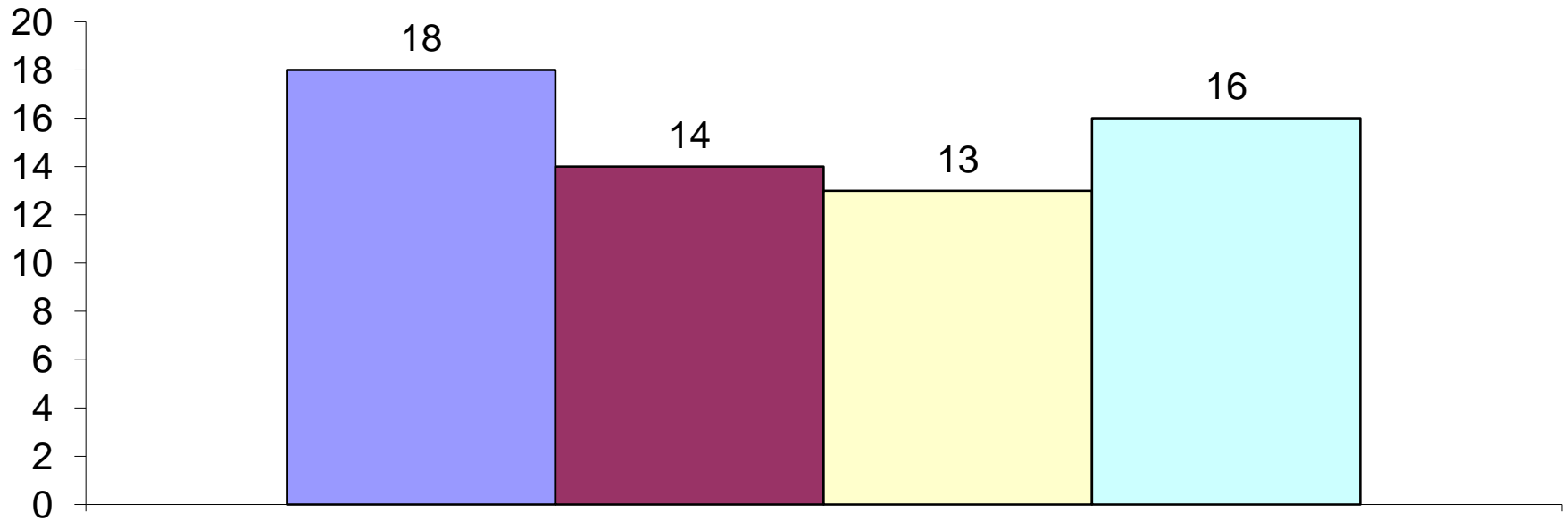
Religious Faith Moderately or Very Strong



Comparative Percentages



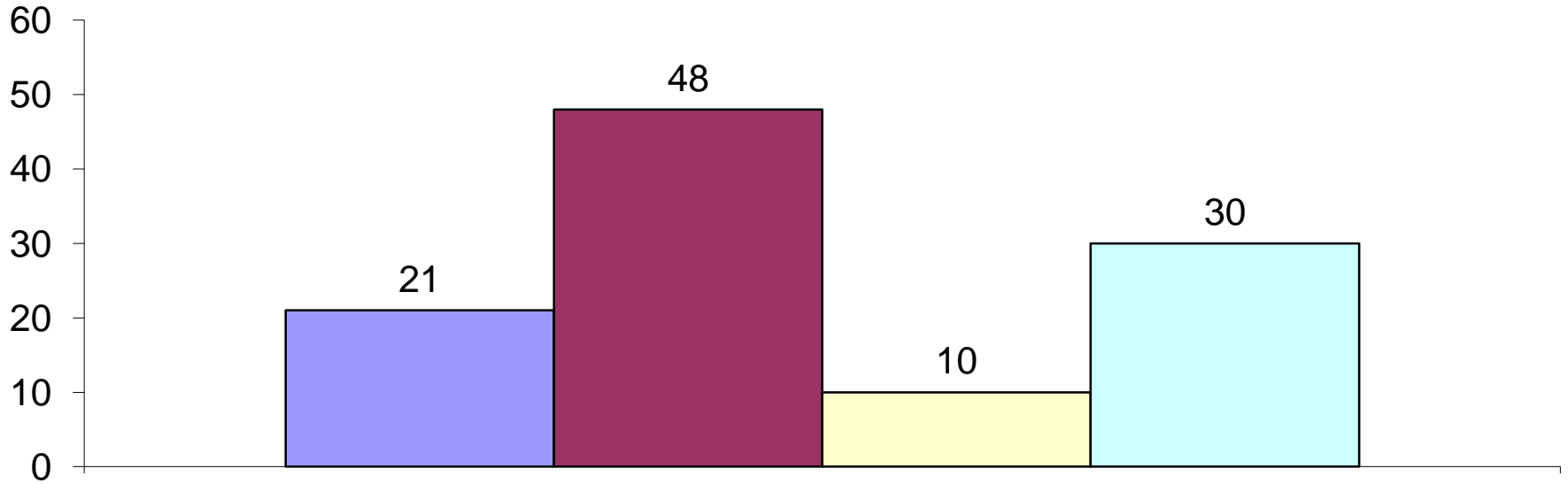
Feel Sad Occasionally or Most of the Time



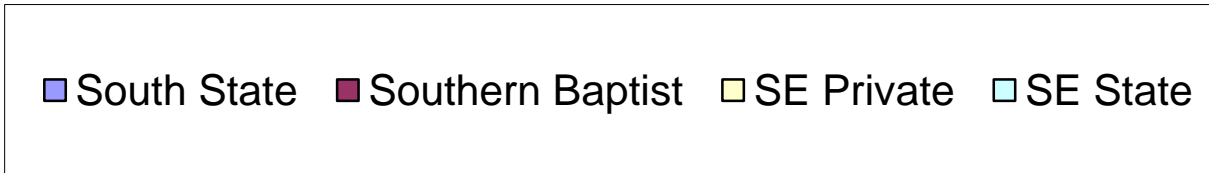
Comparative Percentages

■ South State ■ Southern Baptist ■ SE Private ■ SE State

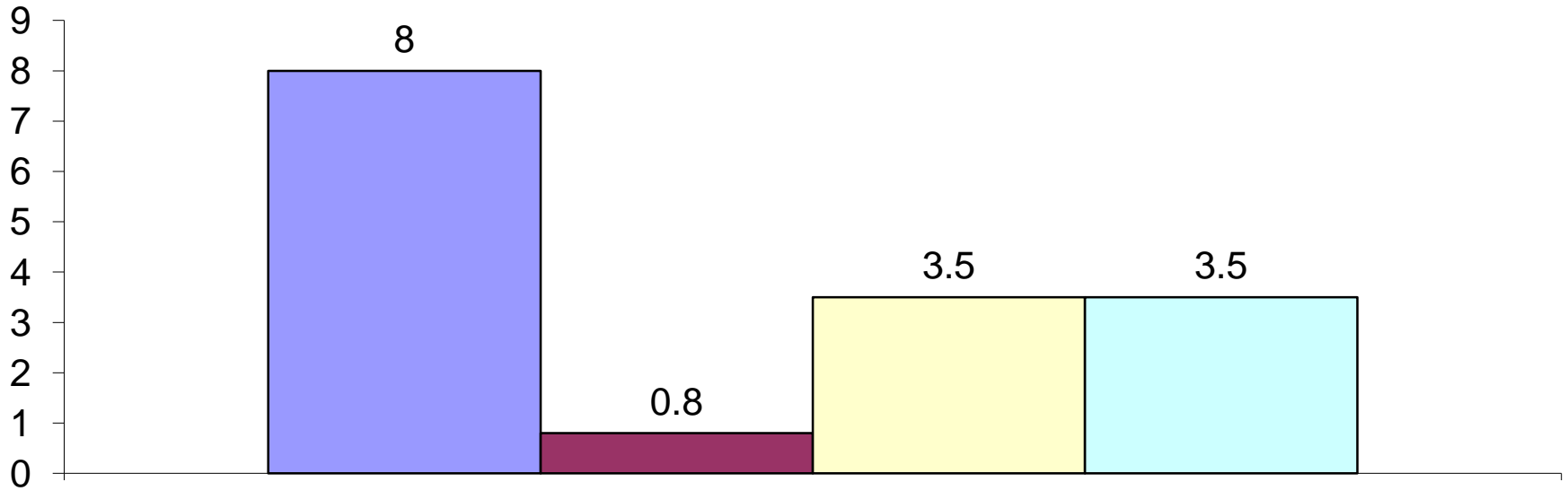
Never Use Alcohol



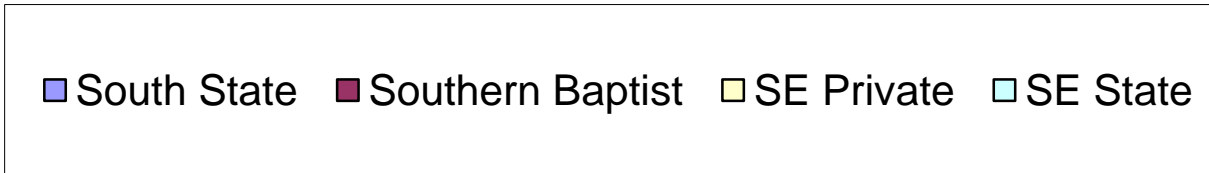
Comparative Percentages



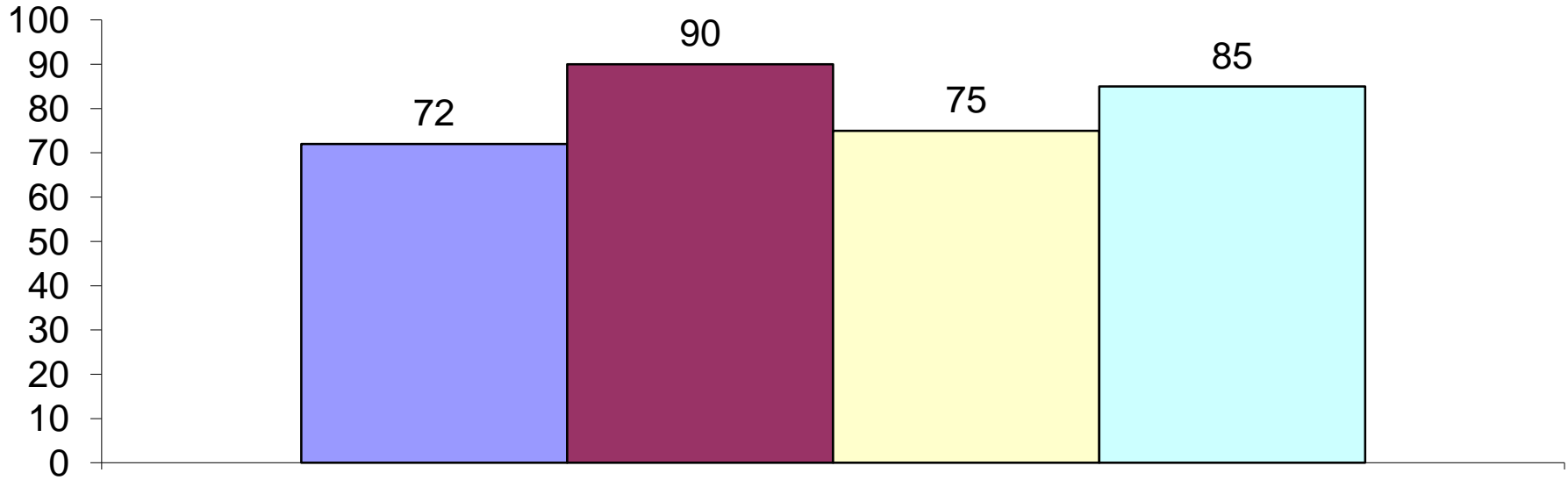
Daily Alcohol Consumption



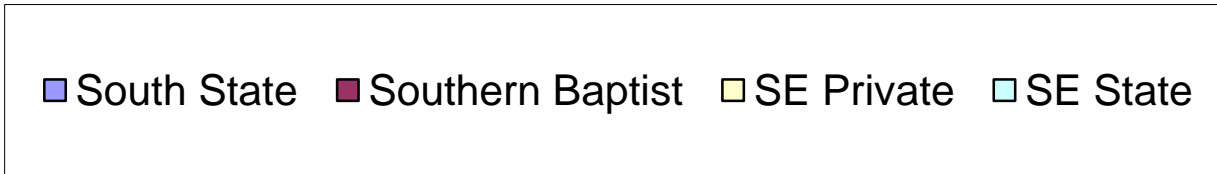
Comparative Percentages



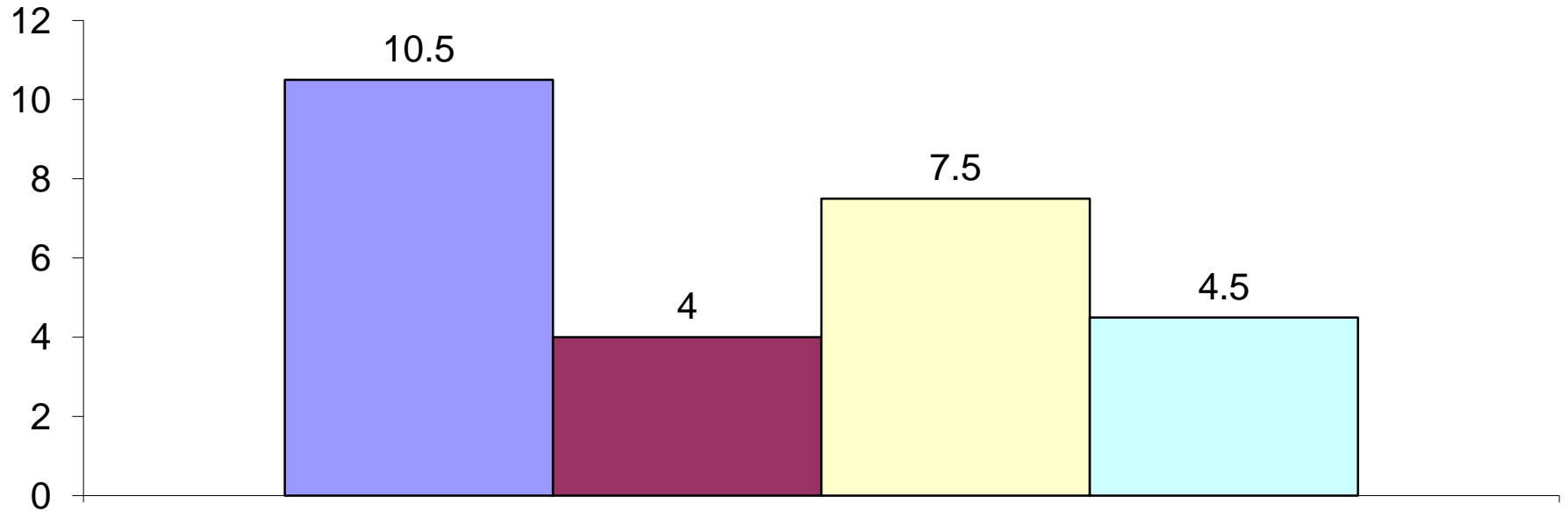
Never Use Marijuana



Comparative Percentages



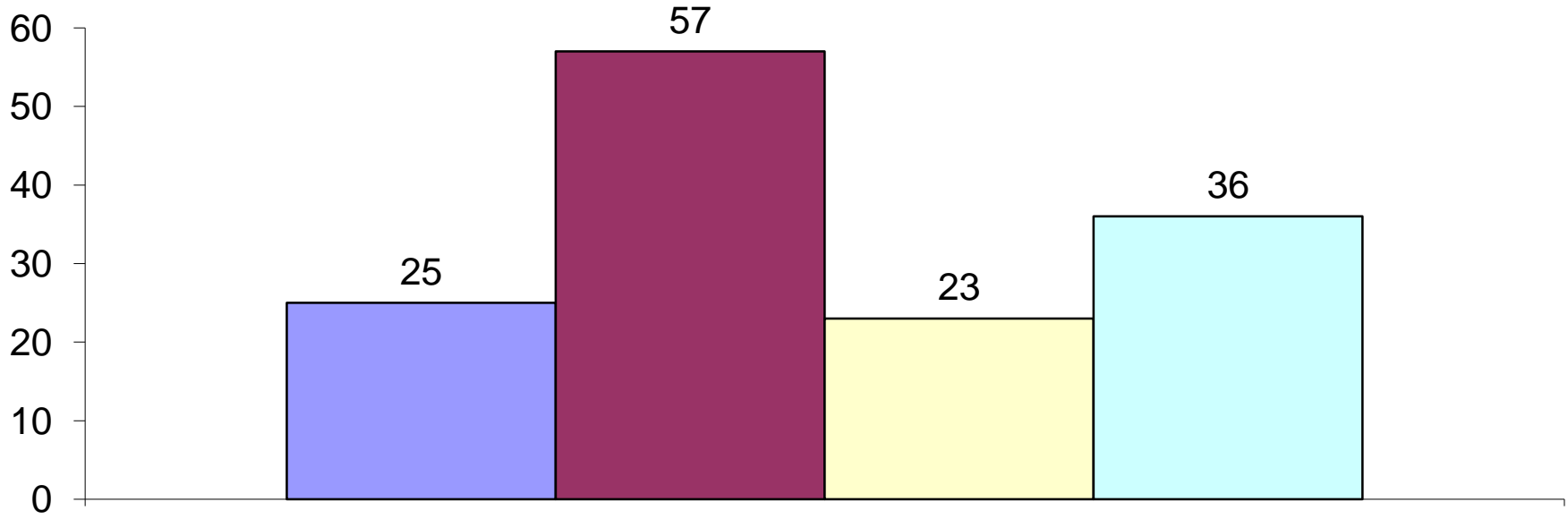
Marijuana Use 10+ Times/Month



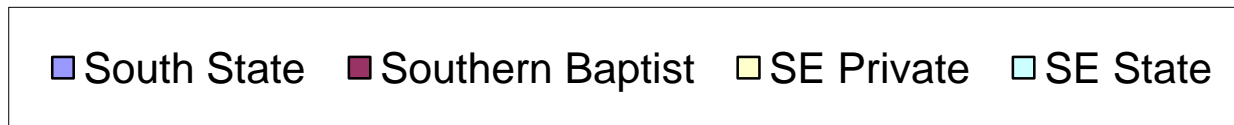
Comparative Percentages

■ South State ■ Southern Baptist ■ SE Private ■ SE State

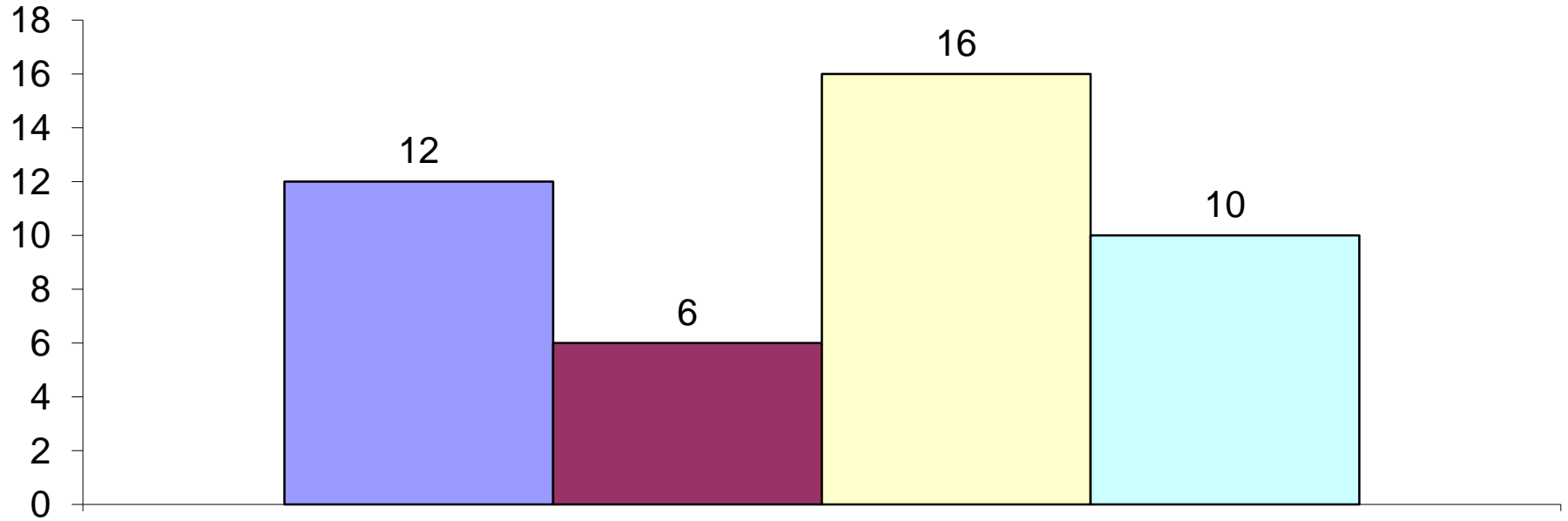
Never Had Sexual Intercourse



Comparative Percentages



Four or More Sex Partners Previous Year



Comparative Percentages

