

Seeking the Moral Community: Religion, Deviance, and Well- Being Among American University Students

Jerome R. Koch

Alden E. Roberts

Myrna L. Armstrong

Texas Tech University

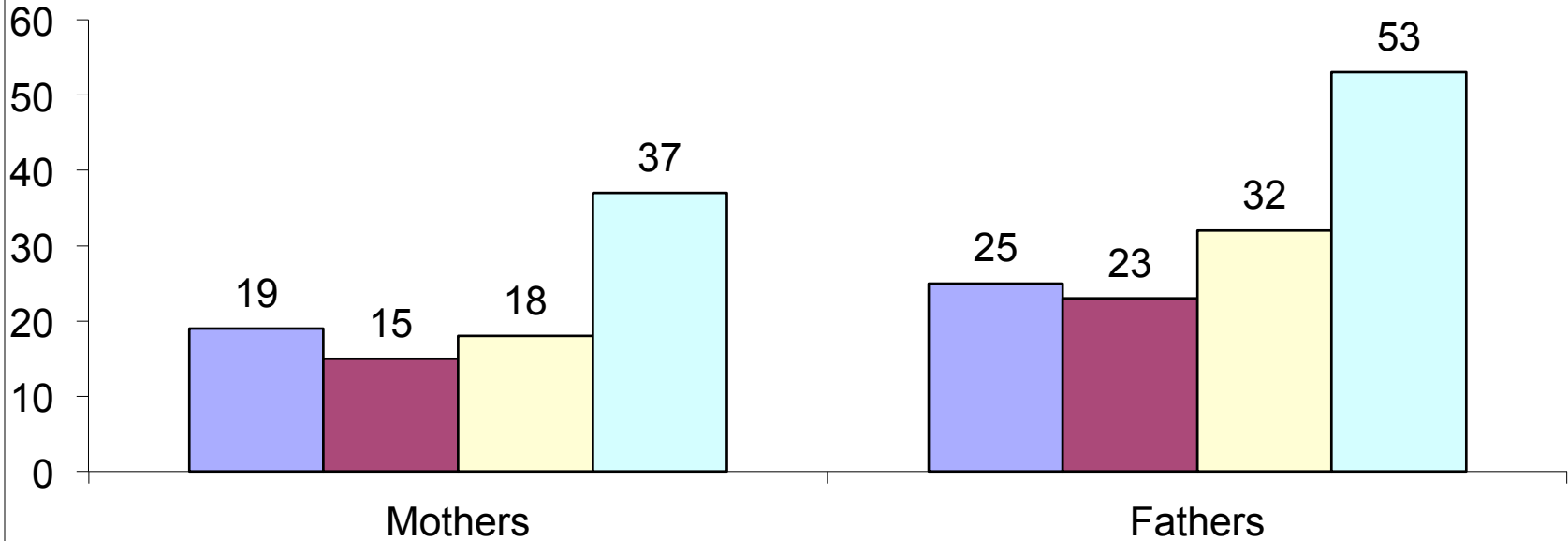
Mid-Way – Fall, 2012

General Characteristics

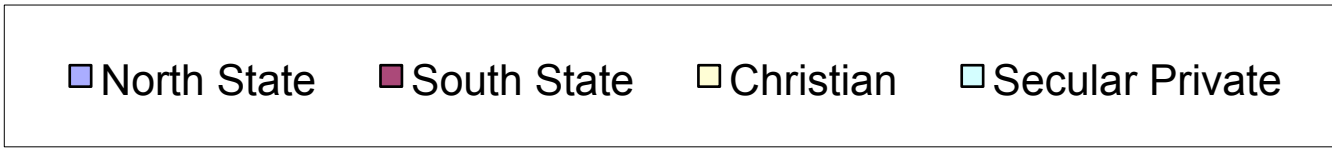
The Sample:

- North State College Students. n=1134
 - South State College Students. n=885
 - Secular Private College Students. n=310
 - Christian (Private) College Students. n=531
-
- 82% Ages 18-20
 - 69% White
 - 61% Female
- Total N = 2860
Response Rate = 78%

Parents With Graduate Degree

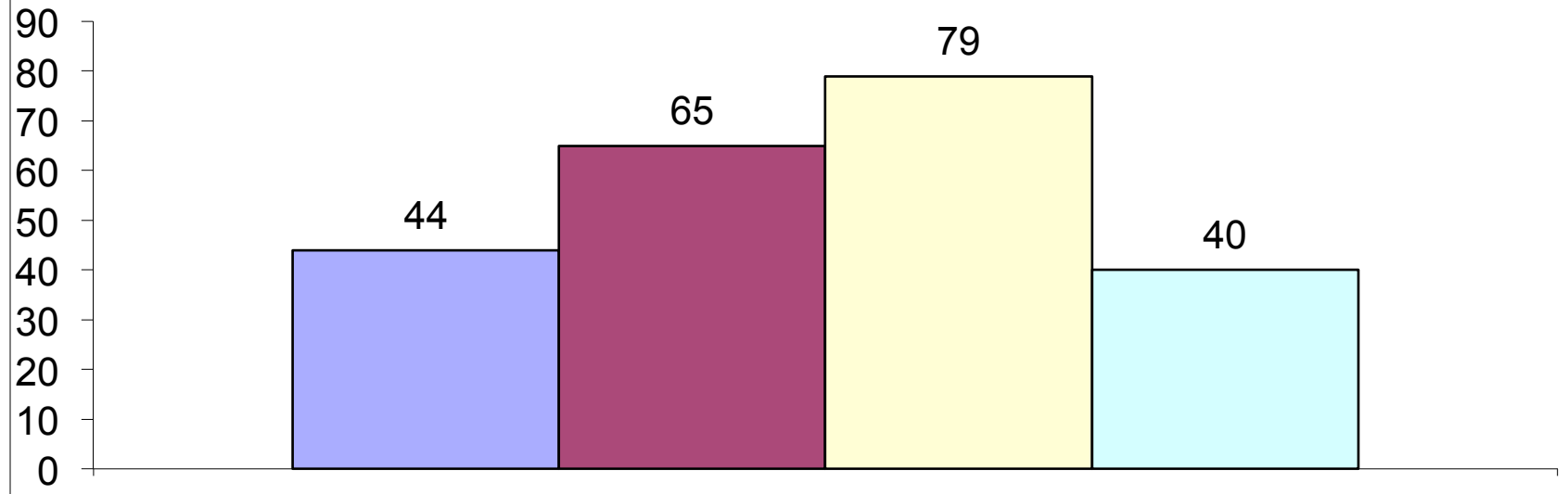


Comparative Percentages



Religious Belief and Practice

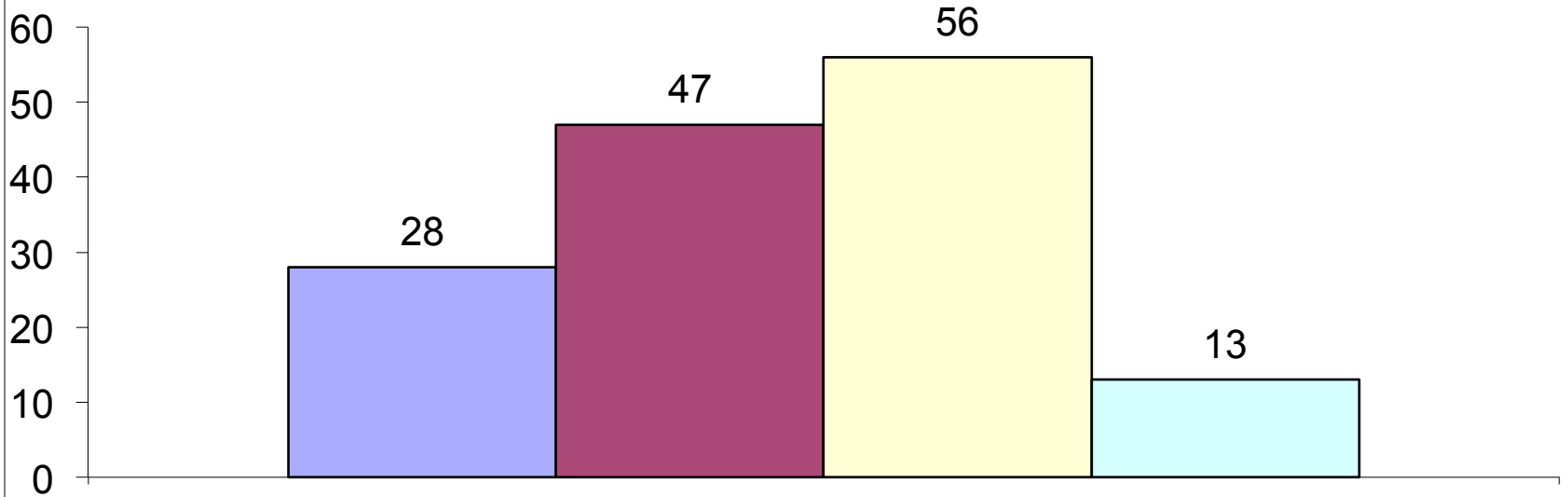
Religious Faith Moderately to Very Strong



Comparative Percentages

- North State
- South State
- Christian
- Secular Private

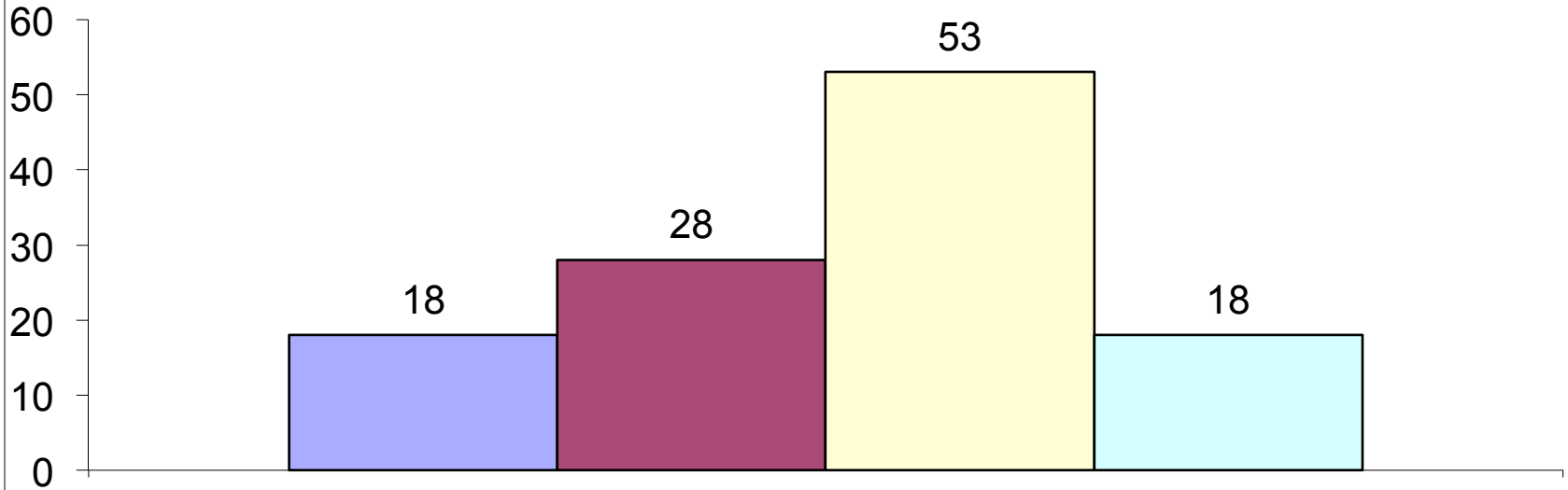
Strongly Agree/Agree - Bible is Infallible



Comparative Percentages

■ North State ■ South State ■ Christian ■ Secular Private

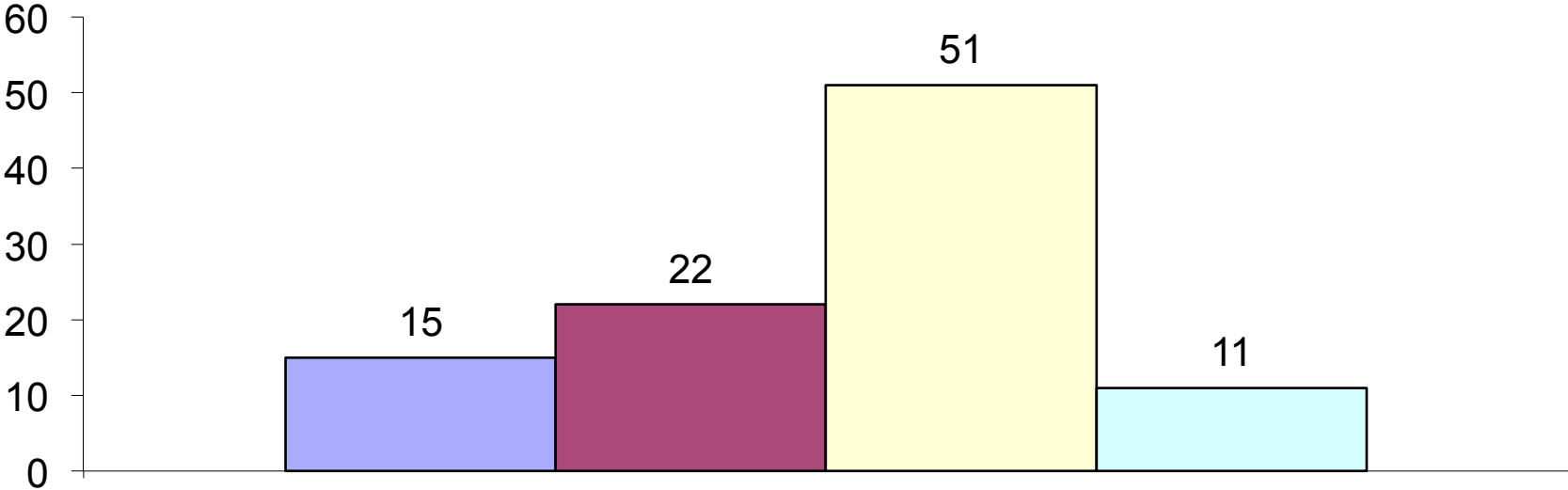
Pray Daily or More Often



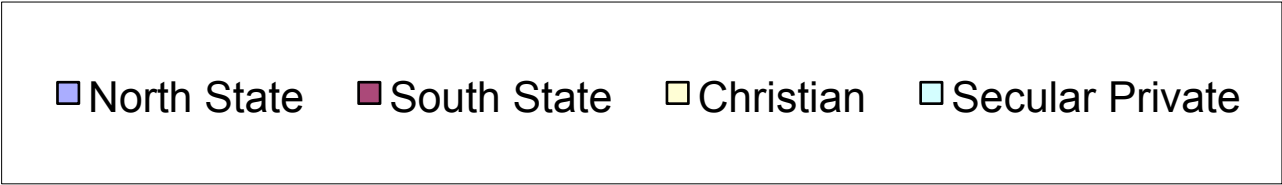
Comparative Percentages

■ North State ■ South State ■ Christian ■ Secular Private

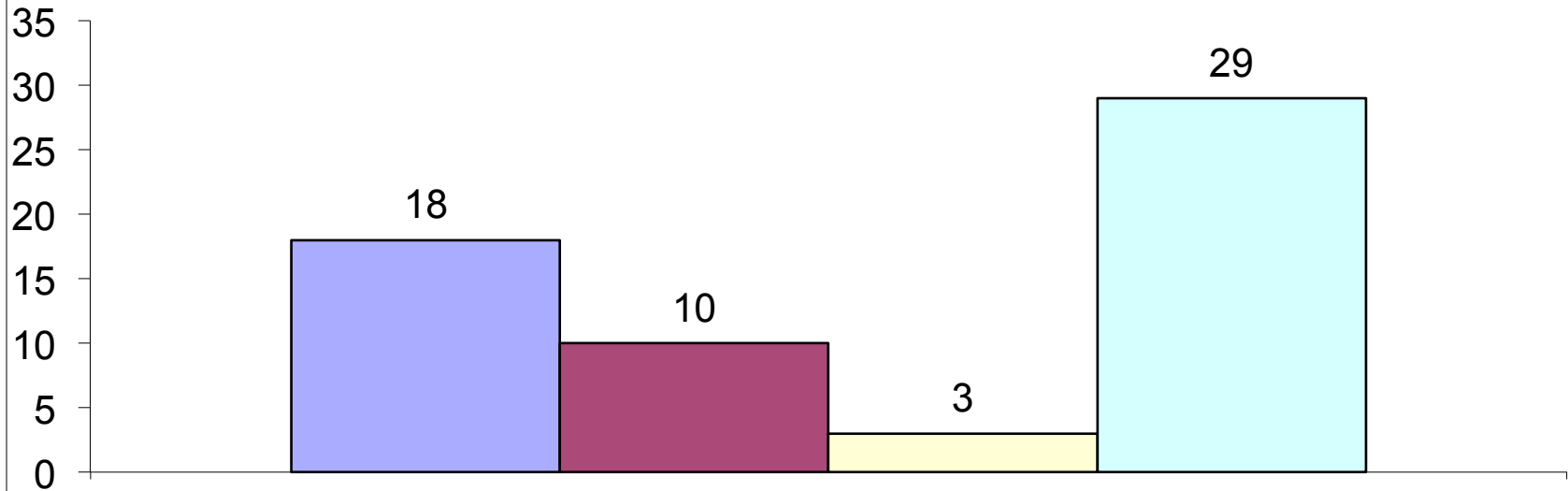
Attend Worship Weekly or More Often



Comparative Percentages



"Most/All of My Friends Are NOT Religious At All."

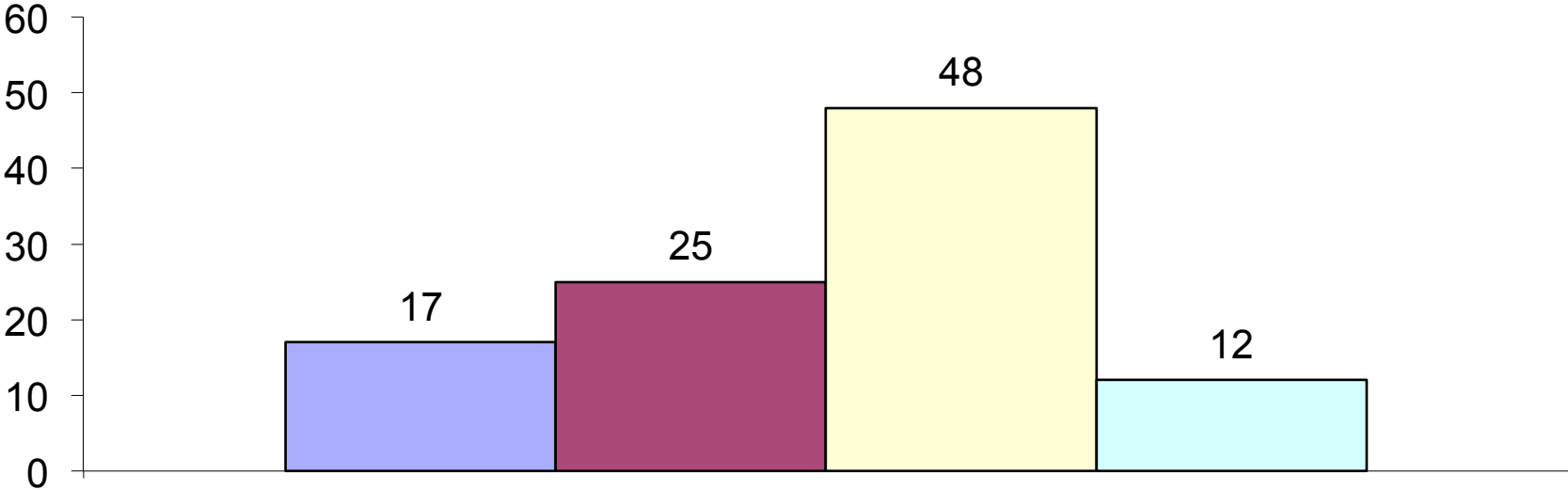


Comparative Percentages

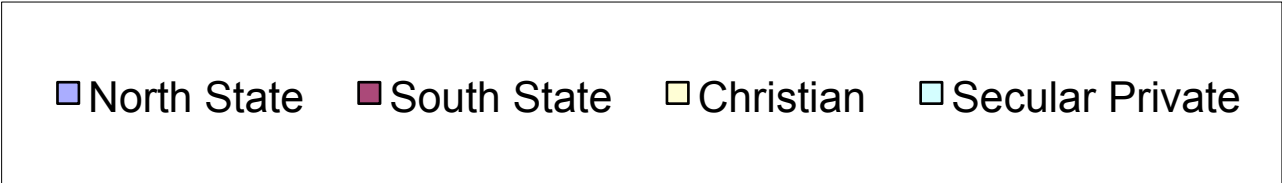
■ North State ■ South State ■ Christian ■ Secular Private

Social Behavior

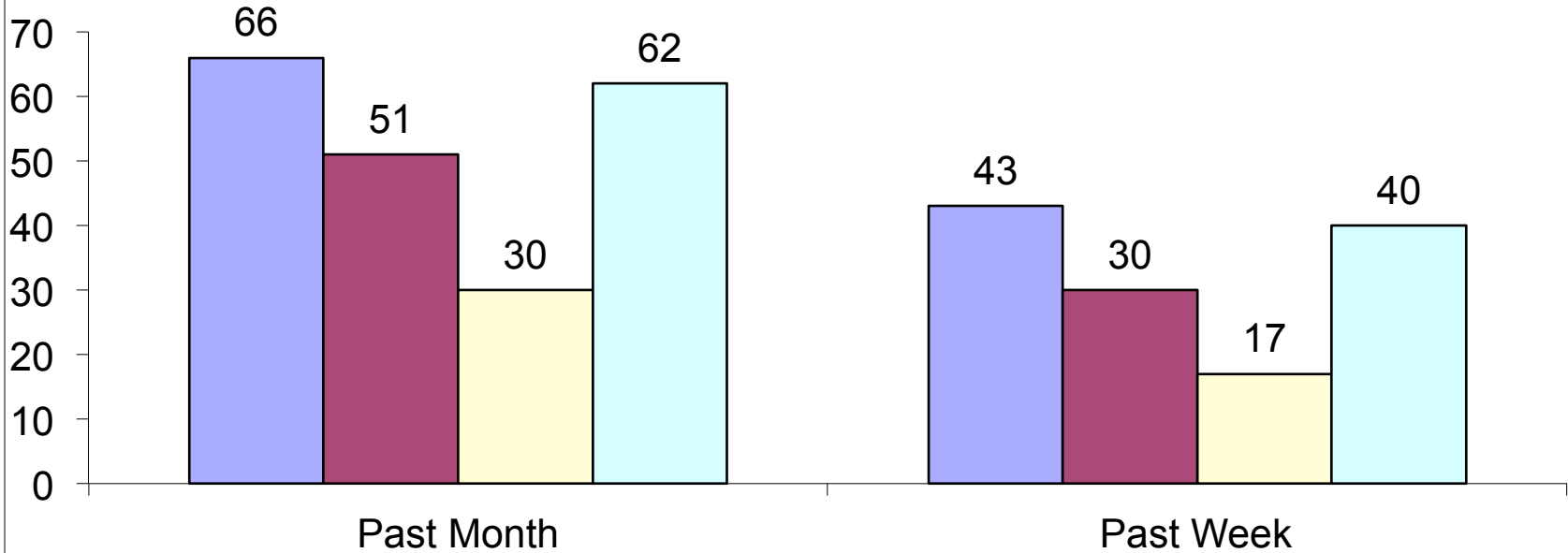
Never Use Alcohol



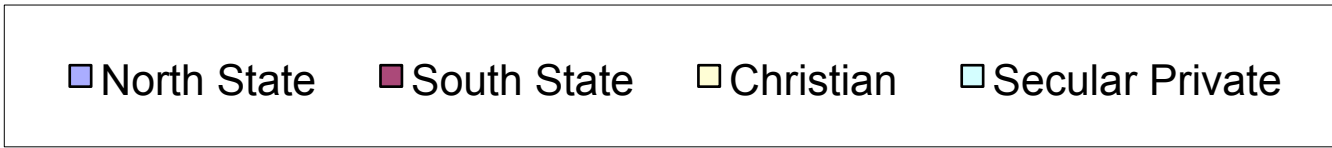
Comparative Percentages



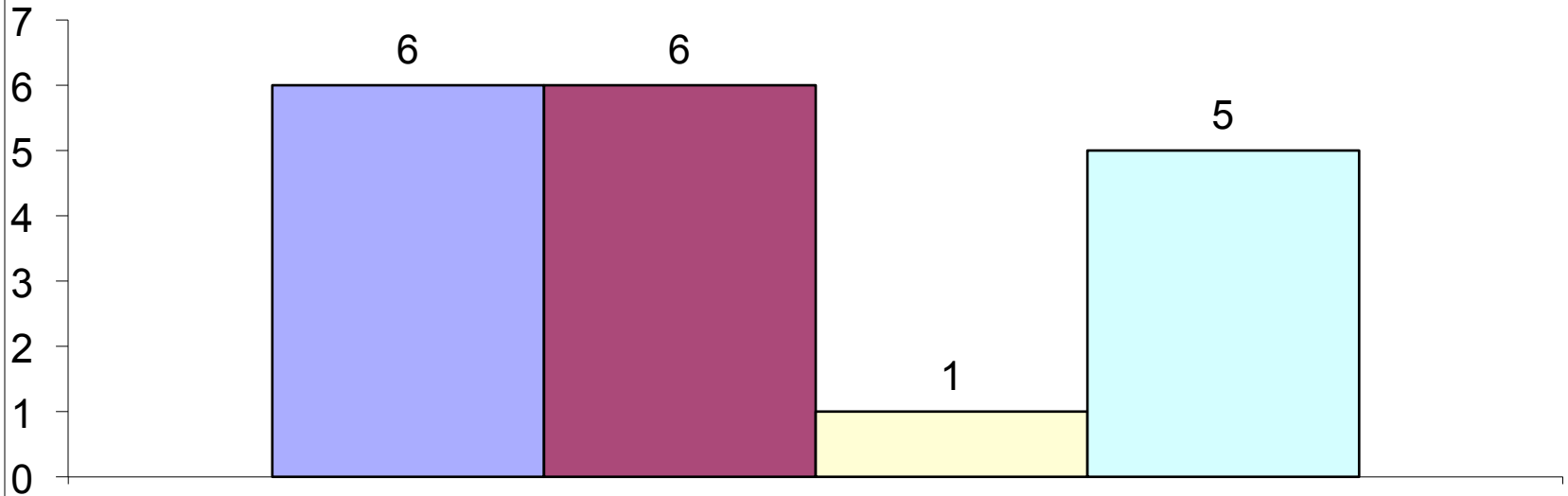
Binge Drinking - 5+ Drinks on One Occasion



Comparative Percentages



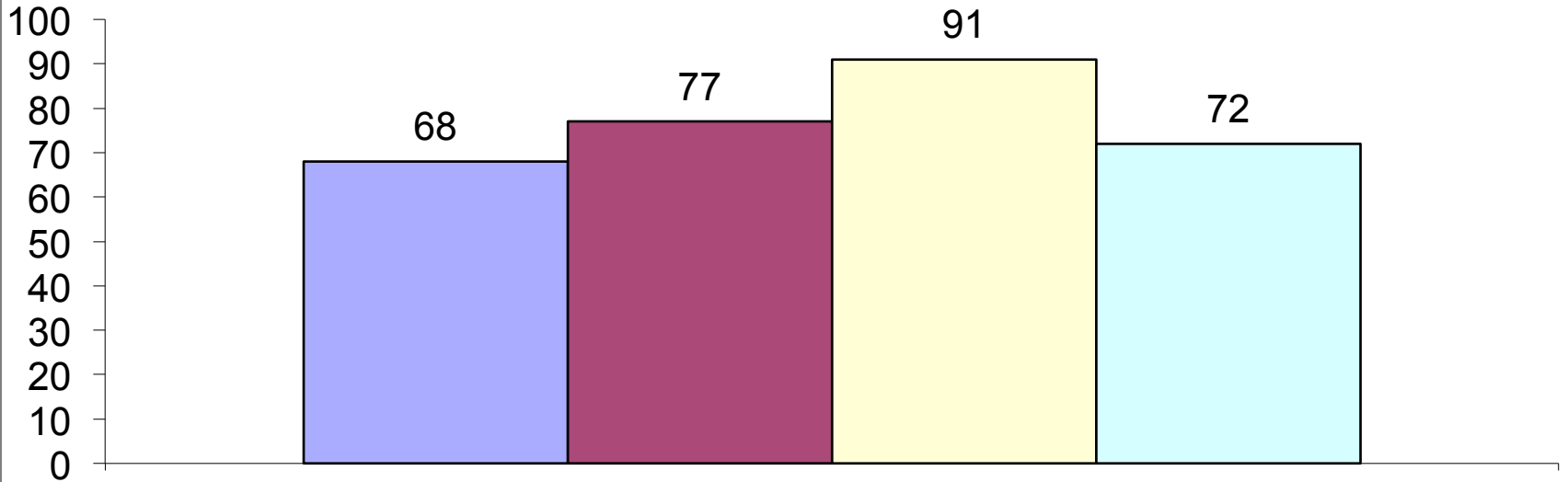
Daily Alcohol Consumption



Comparative Percentages

■ North State ■ South State ■ Christian ■ Secular Private

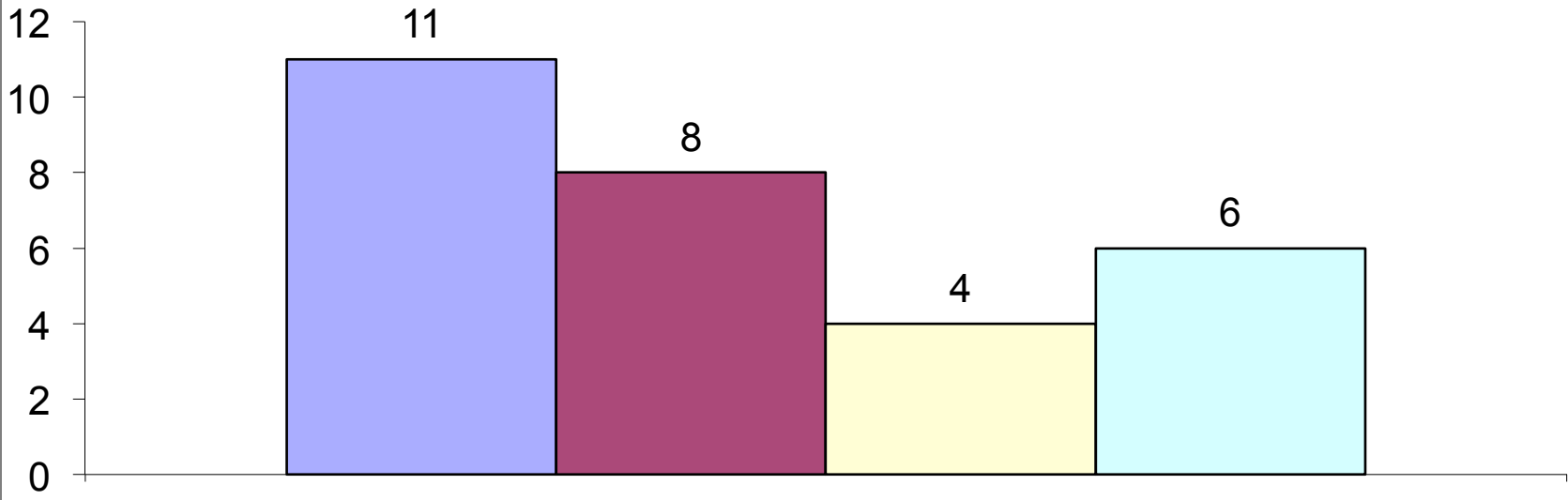
Never Use Marijuana



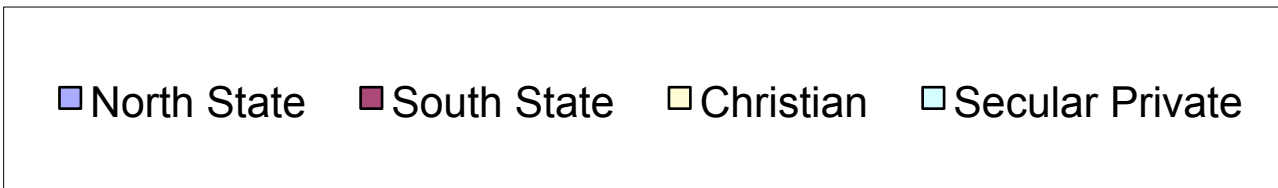
Comparative Percentages

■ North State ■ South State ■ Christian ■ Secular Private

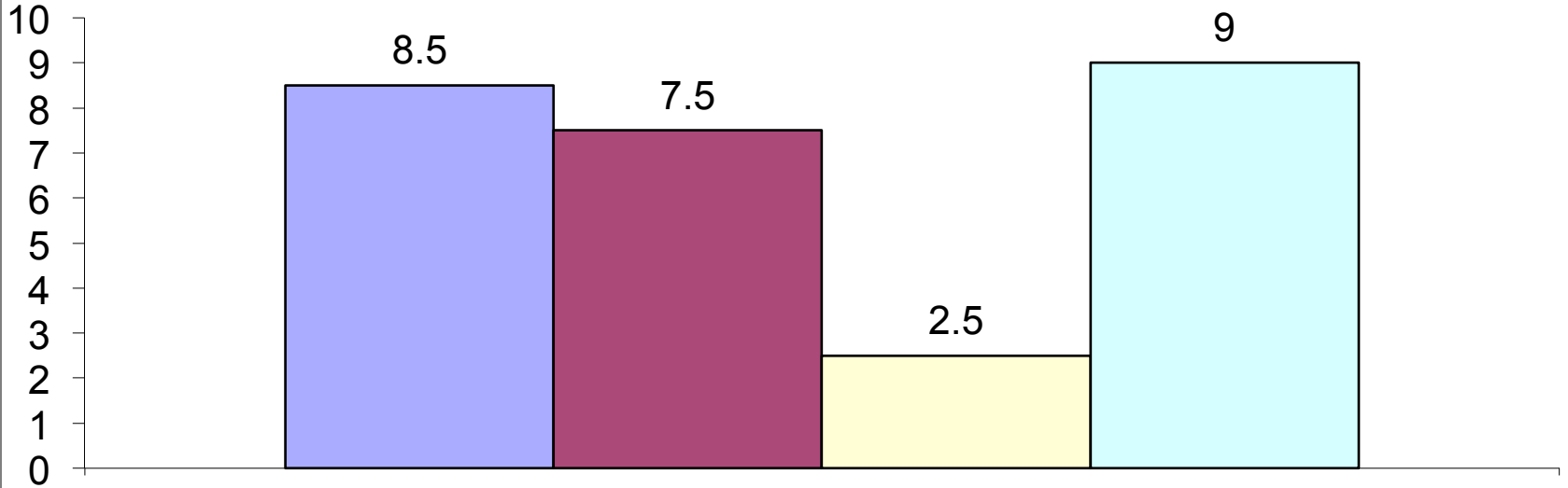
Marijuana Use - 10+ Times/Month



Comparative Percentages



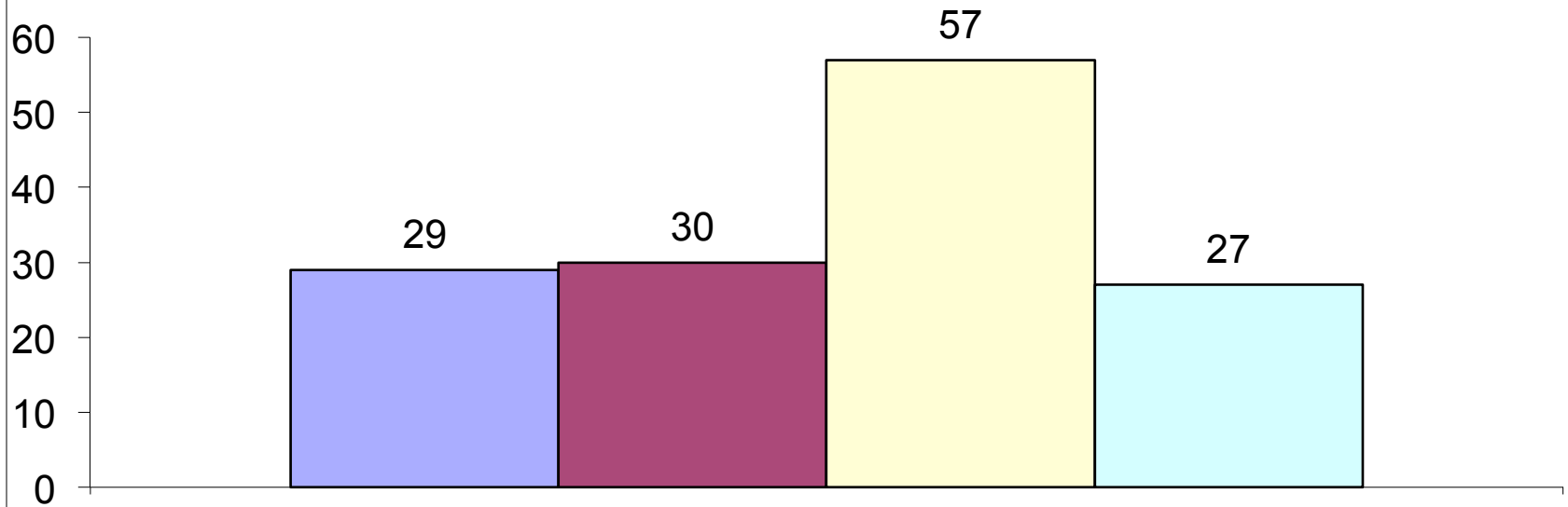
Other Illegal Drug Use - Monthly or More



Comparative Percentages

■ North State ■ South State ■ Christian ■ Secular Private

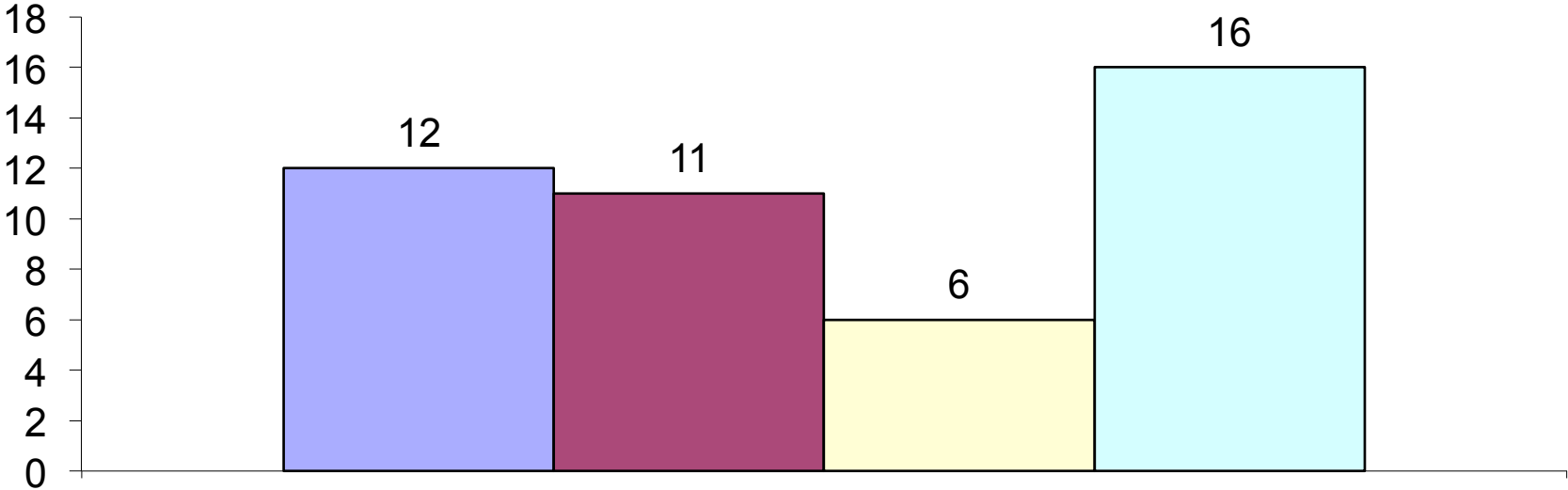
Never Had Sexual Intercourse



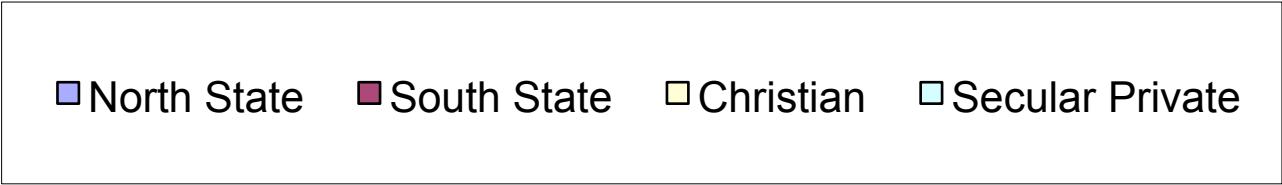
Comparative Percentages

■ North State ■ South State ■ Christian ■ Secular Private

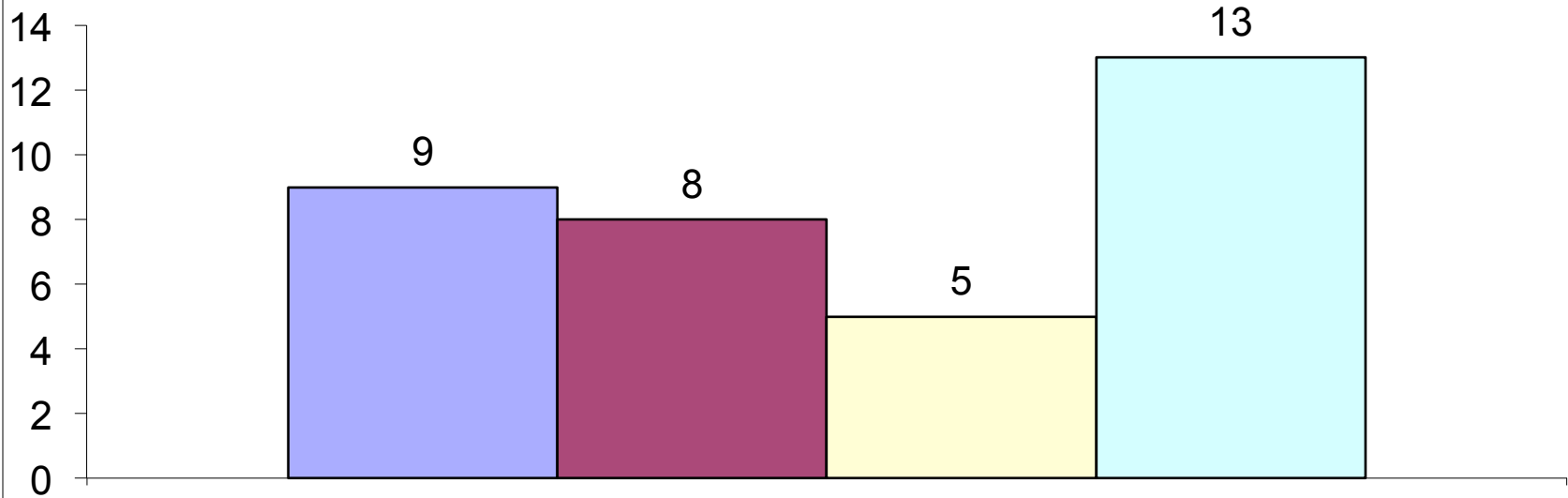
Four or More Sex Partners - Previous Year



Comparative Percentages



Nine or More Sex Partners - Lifetime

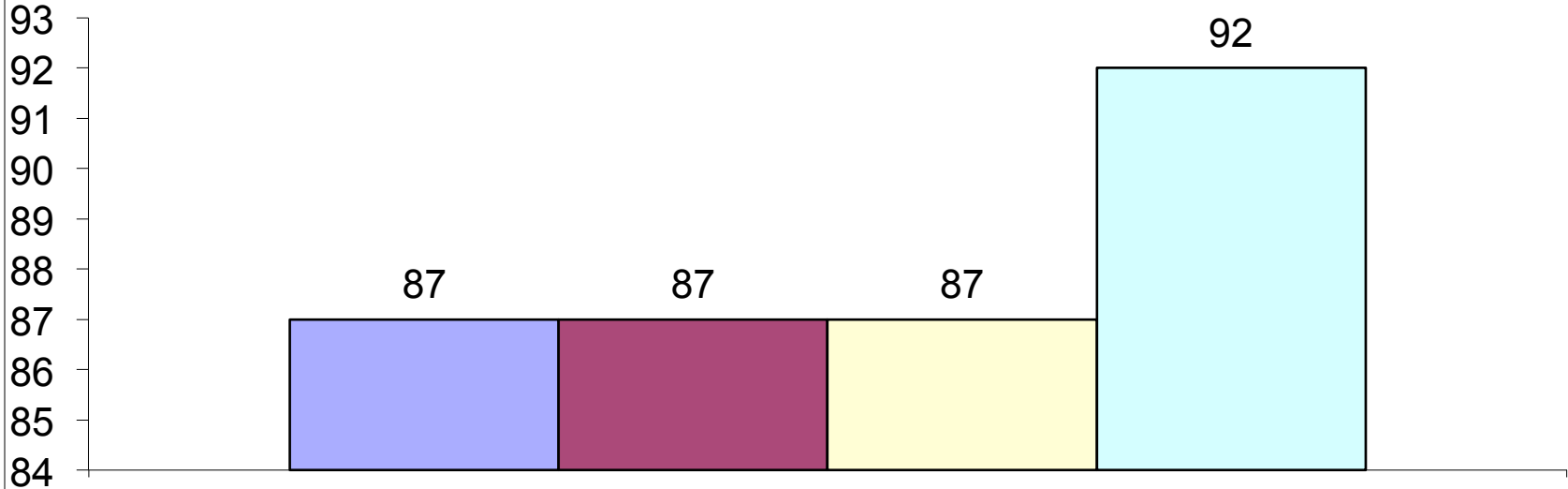


Comparative Percentages

■ North State ■ South State ■ Christian ■ Secular Private

Well-Being – Or Not

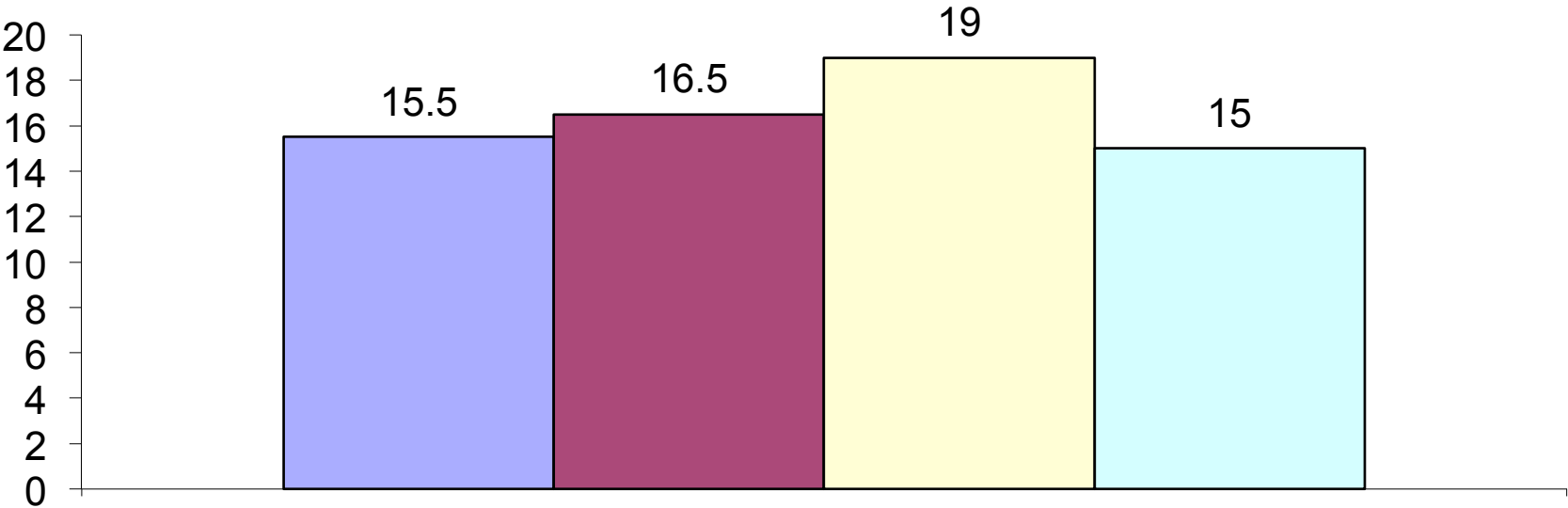
Strongly Agree/Agree - "I Am A Person of Worth."



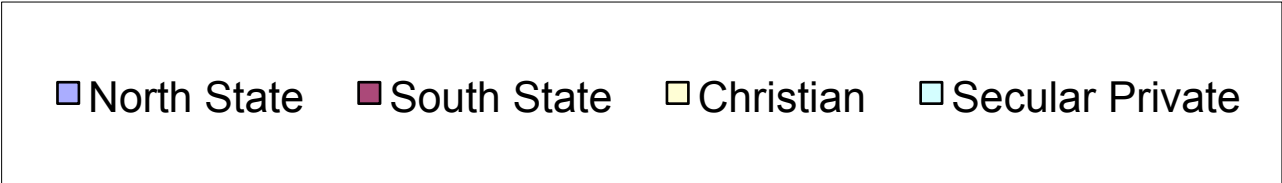
Comparative Percentages

■ North State ■ South State ■ Christian ■ Secular Private

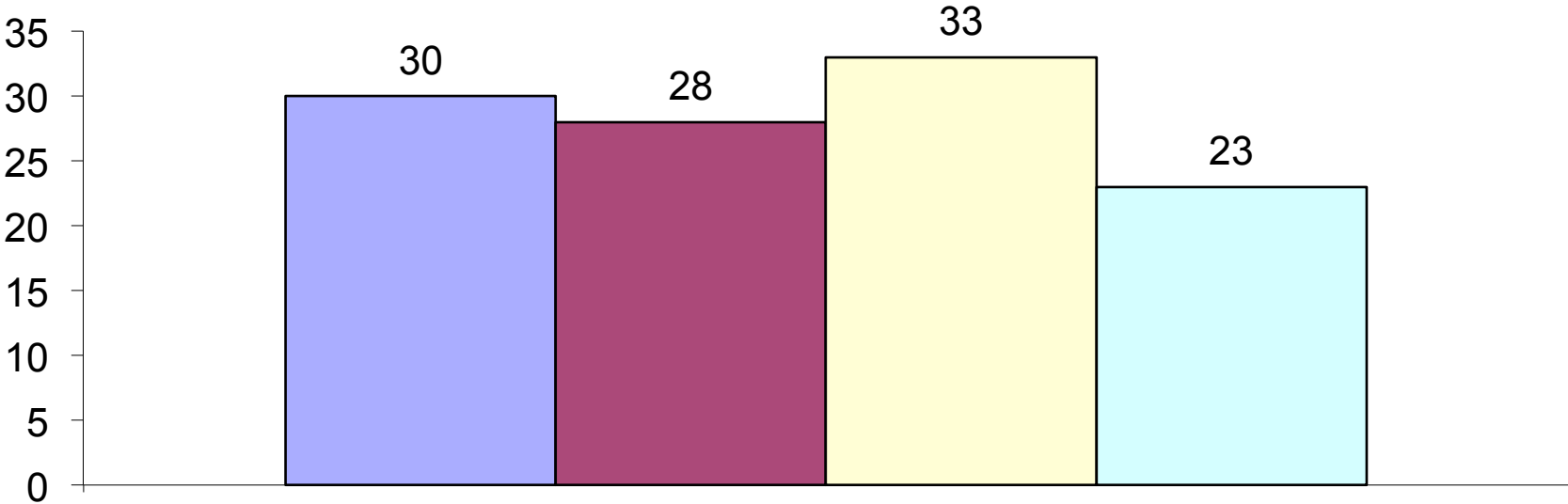
Very Strong/Strong Need for Uniqueness



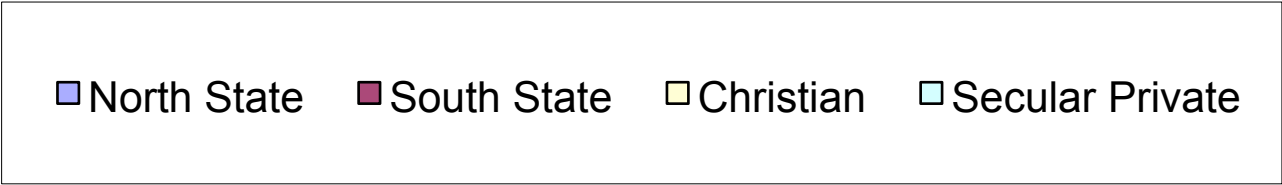
Comparative Percentages



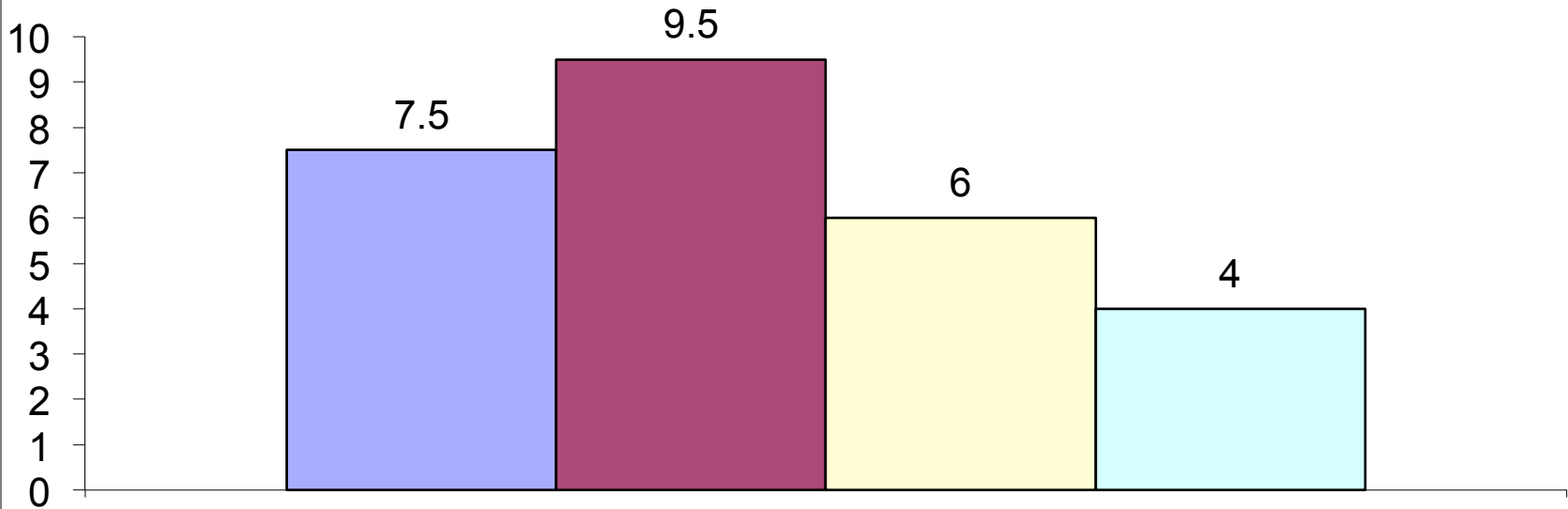
Moderately or Very Dissatisfied With (My) Body



Comparative Percentages



Attempted Suicide



Comparative Percentages

■ North State ■ South State ■ Christian ■ Secular Private