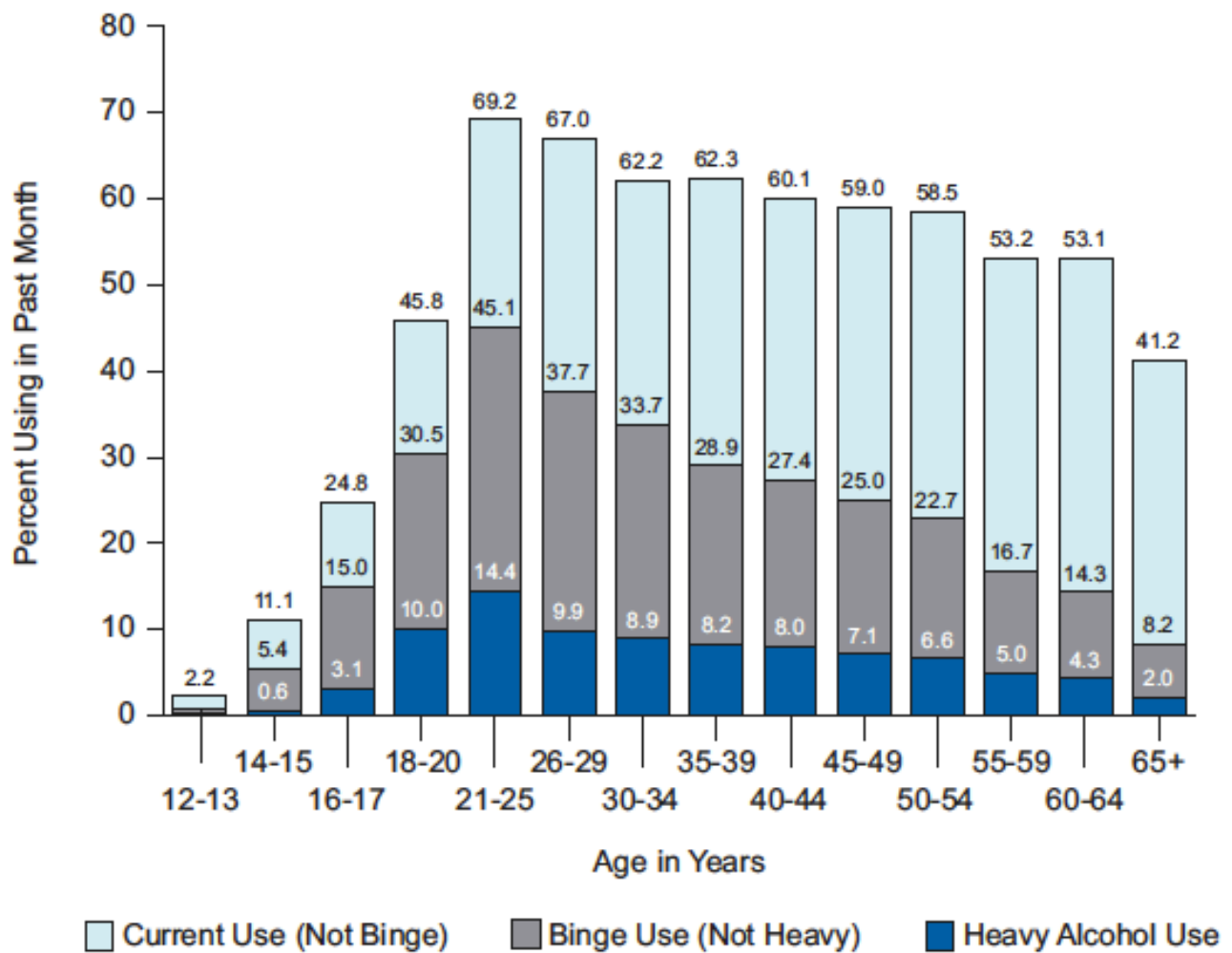
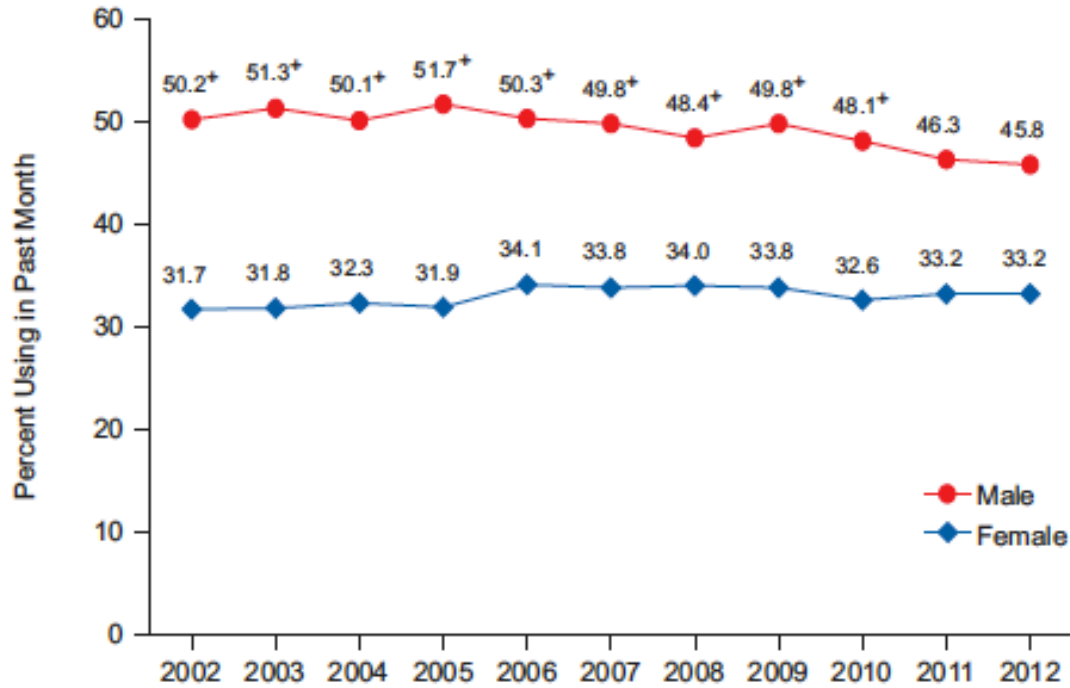


Figure 3.1 Current, Binge, and Heavy Alcohol Use among Persons Aged 12 or Older, by Age: 2012



Note: The past month binge alcohol use estimate for 12 or 13 year olds is 0.9 percent, and the past month heavy alcohol use estimate is 0.2 percent.

Figure 3.2 Binge Alcohol Use among Adults Aged to 25, by Gender: 2002-2012



⁺ Difference between this estimate and the 2012 estimate is statistically significant at the .05 level.

Figure 3.3 Current, Binge, and Heavy Alcohol Use among Persons Aged 12 or Older, by Race/Ethnicity: 2012

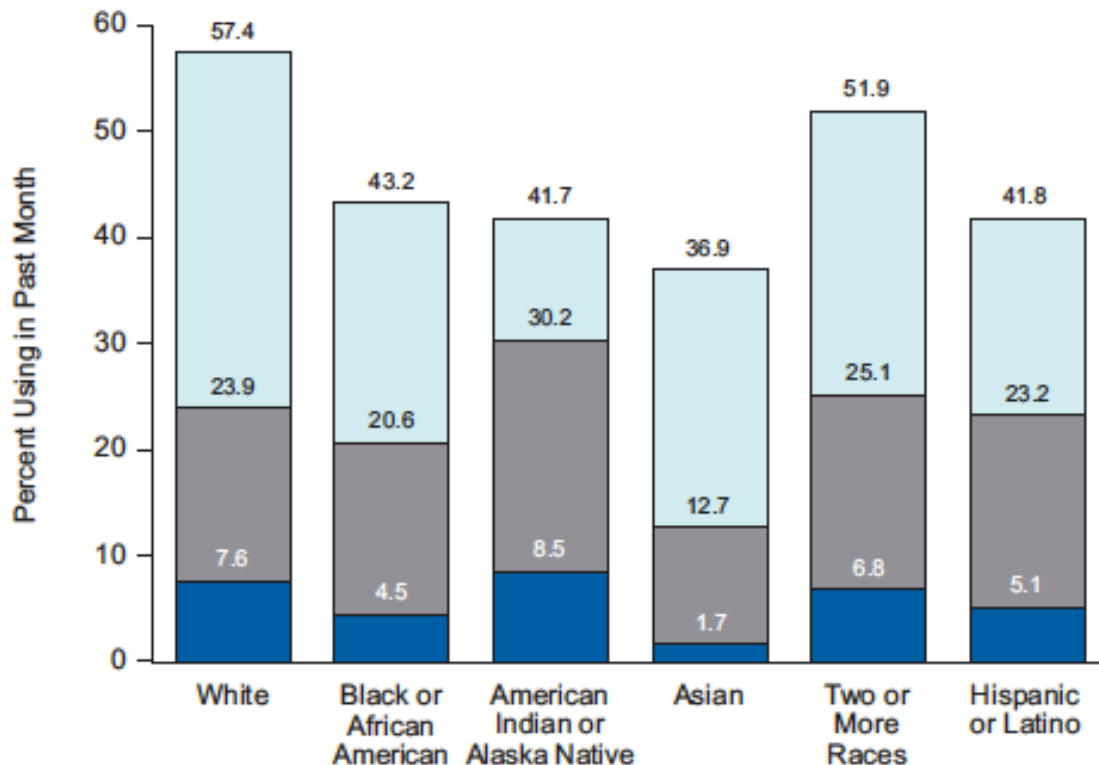
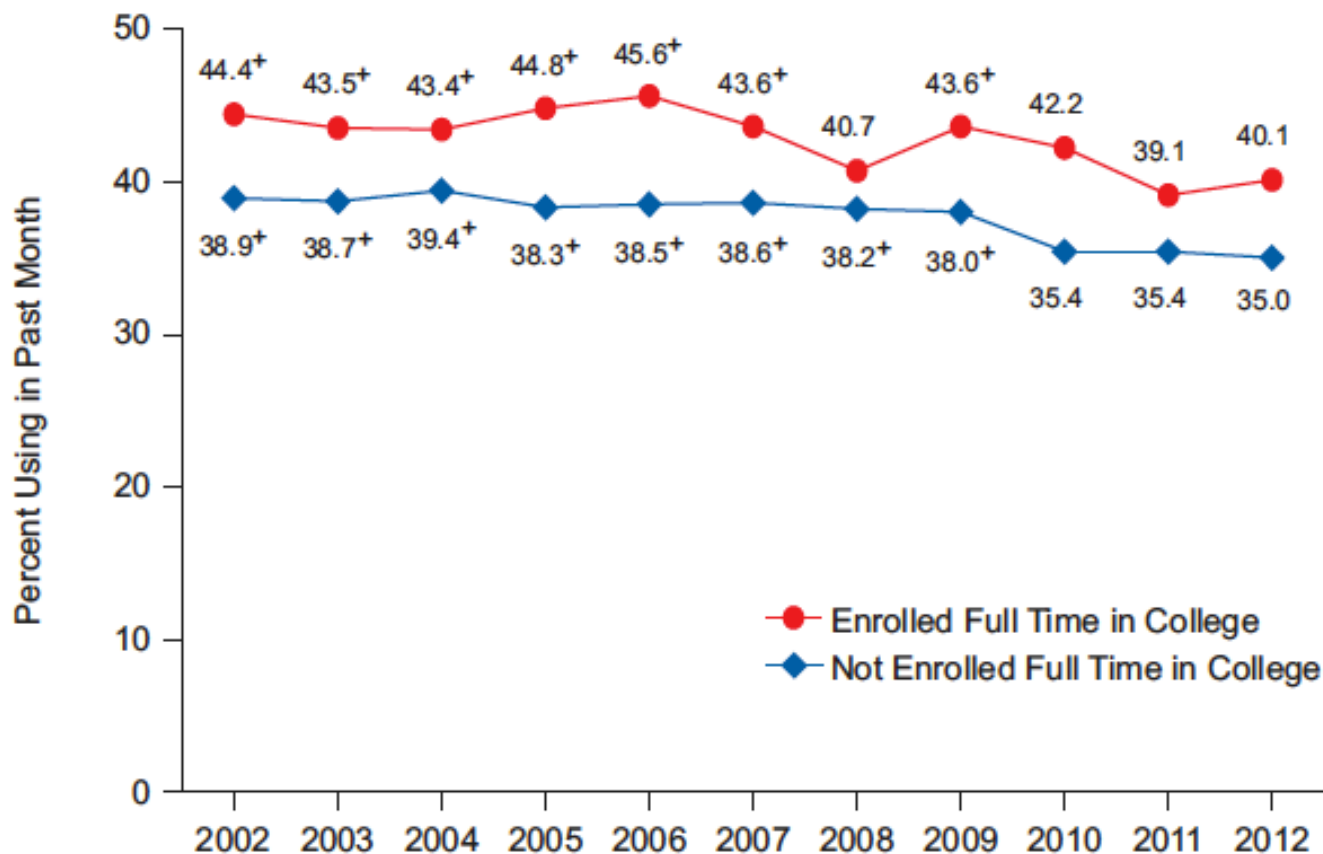
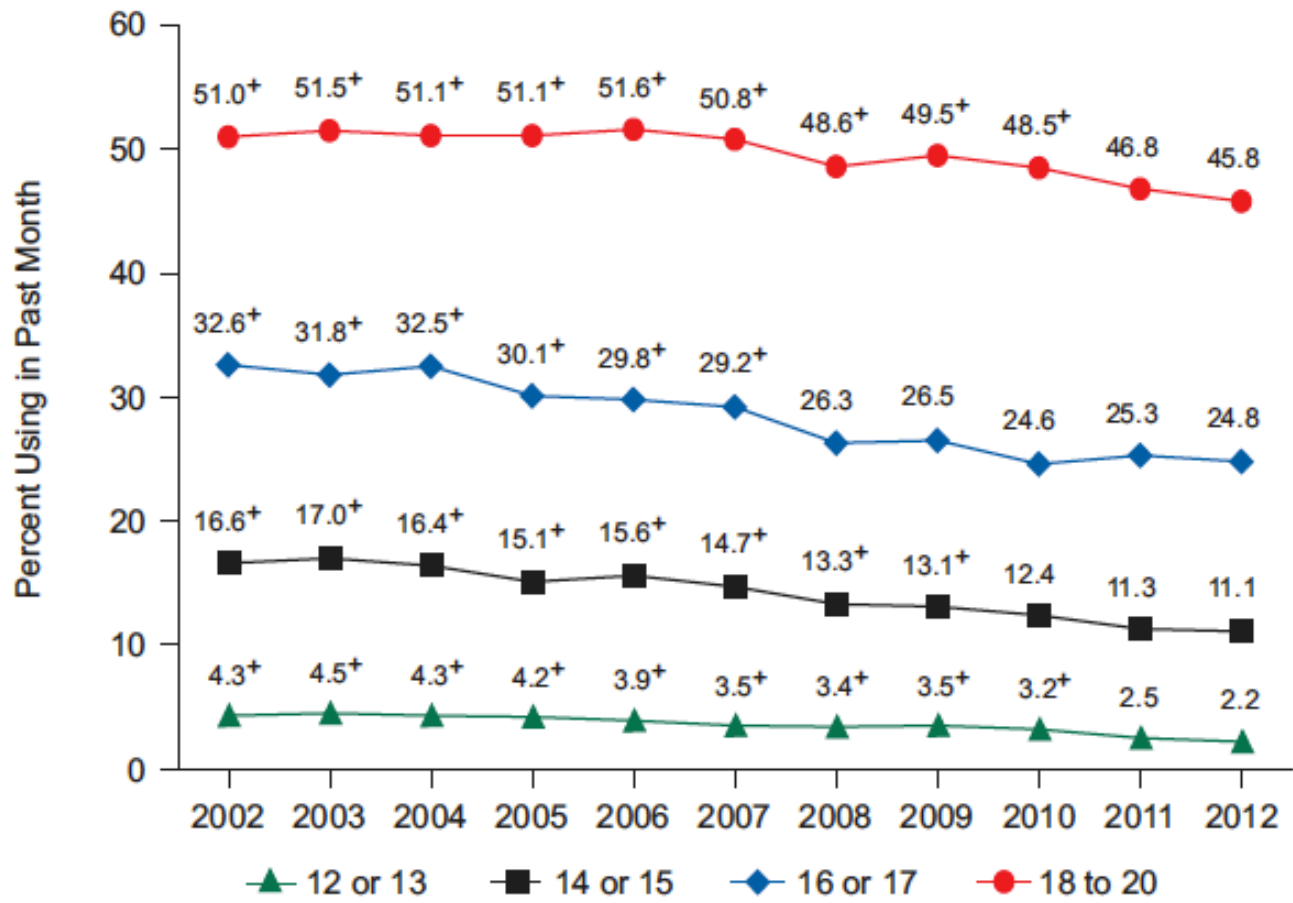


Figure 3.4 Binge Alcohol Use among Adults Aged 18 to 22, by College Enrollment: 2002-2012



⁺ Difference between this estimate and the 2012 estimate is statistically significant at the .05 level.

Figure 3.7 Current Alcohol Use among Persons Aged 12 to 20, by Age: 2002-2012



⁺ Difference between this estimate and the 2012 estimate is statistically significant at the .05 level.

Figure 3.6 Driving Under the Influence of Alcohol in the Past Year among Persons Aged 16 or Older, by Age: 2012

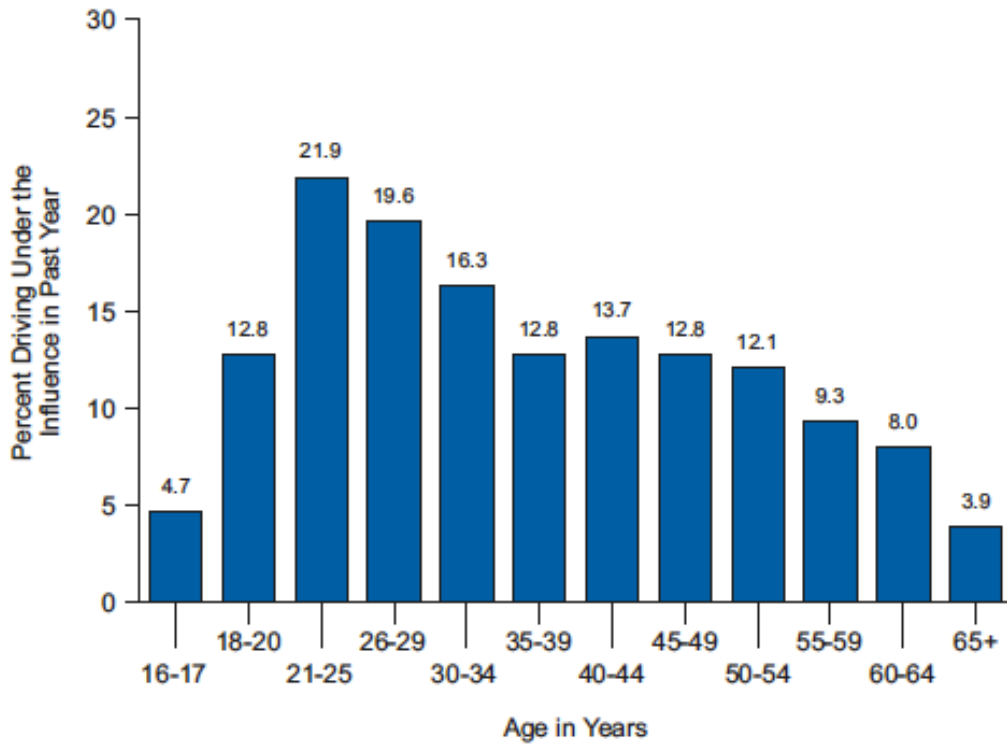


Figure 3.8 Current, Binge, and Heavy Alcohol Use among Persons Aged 12 to 20, by Gender: 2012

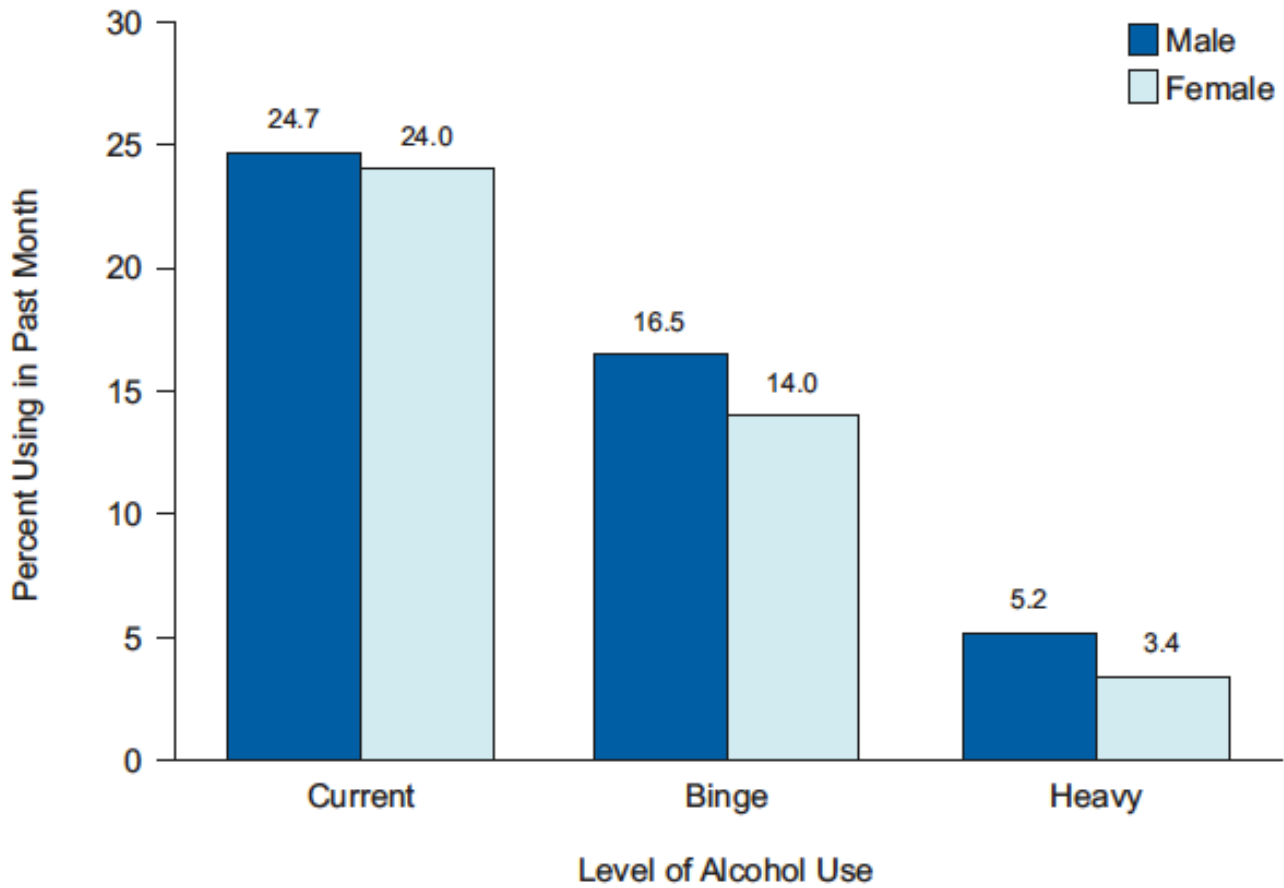
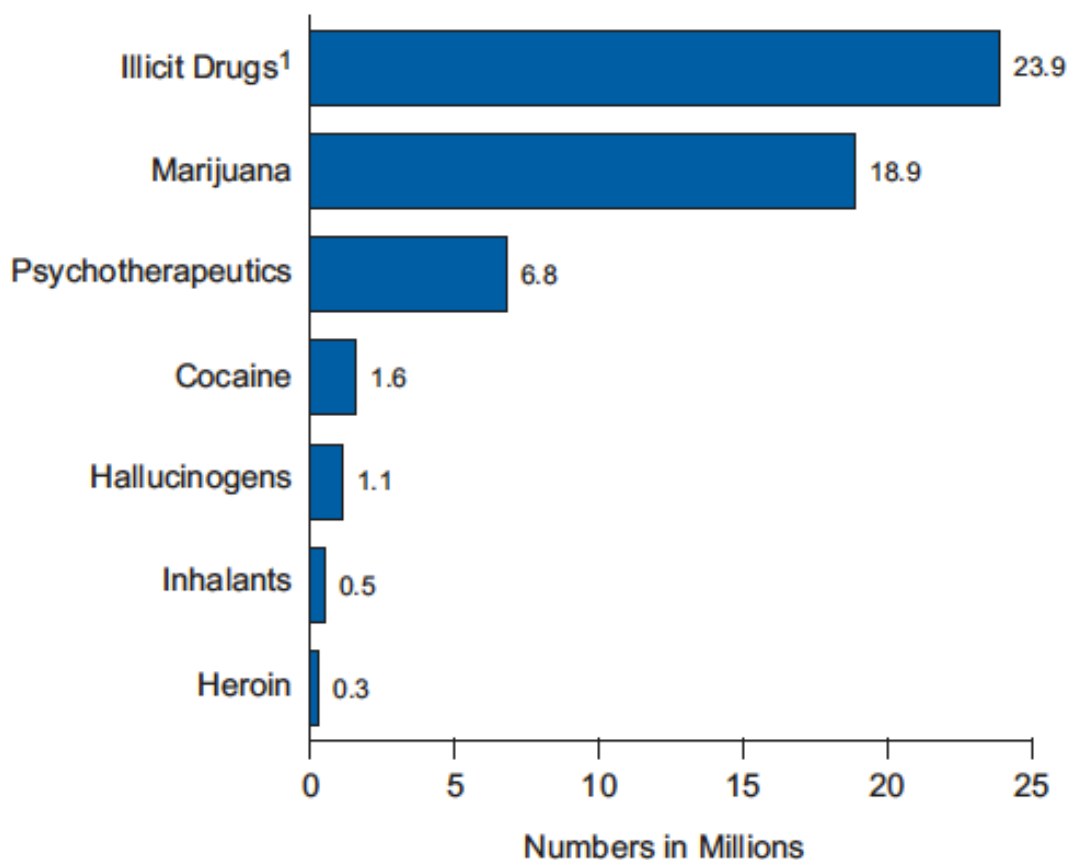
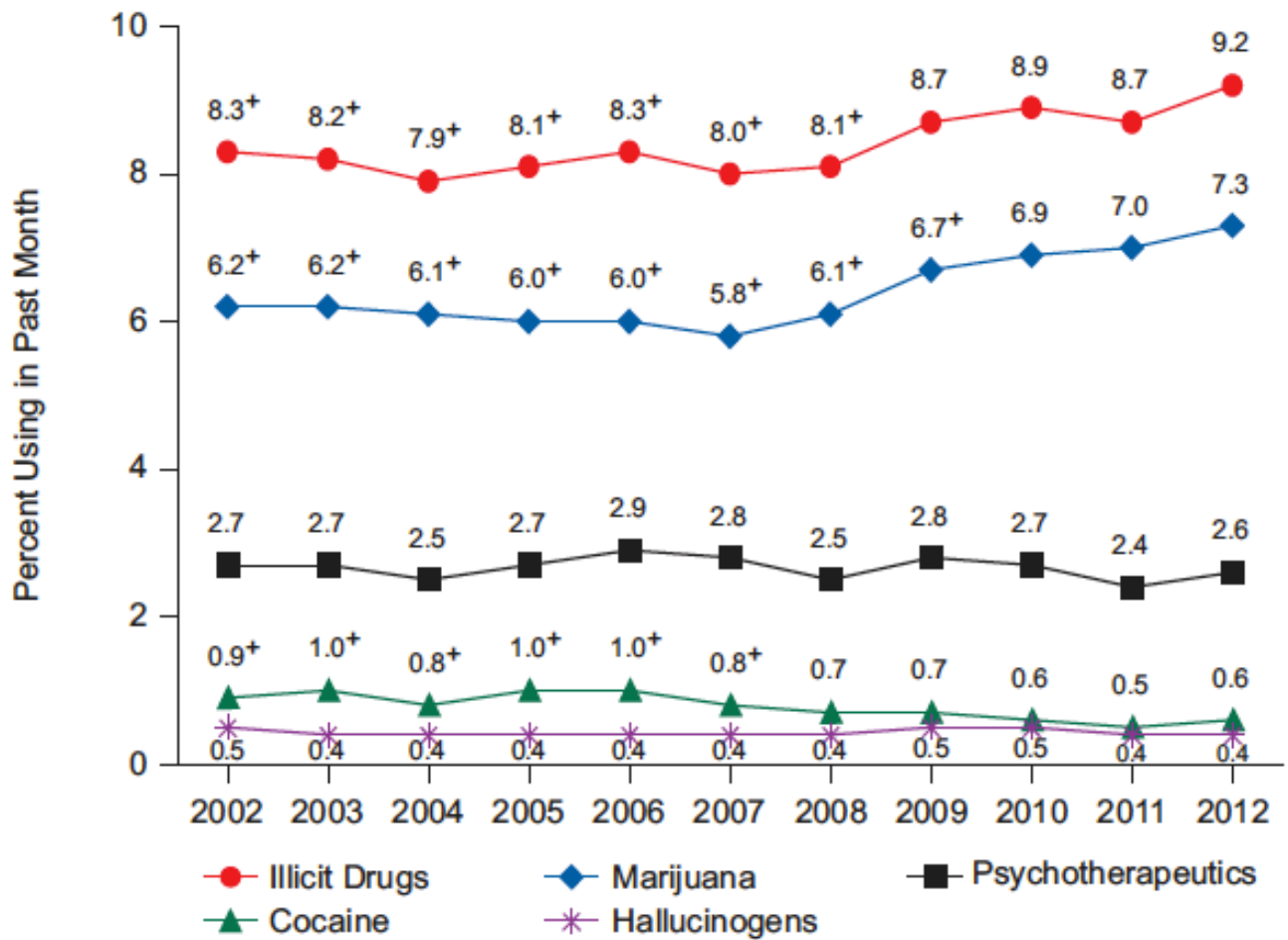


Figure 2.1 Past Month Illicit Drug Use among Persons Aged 12 or Older: 2012



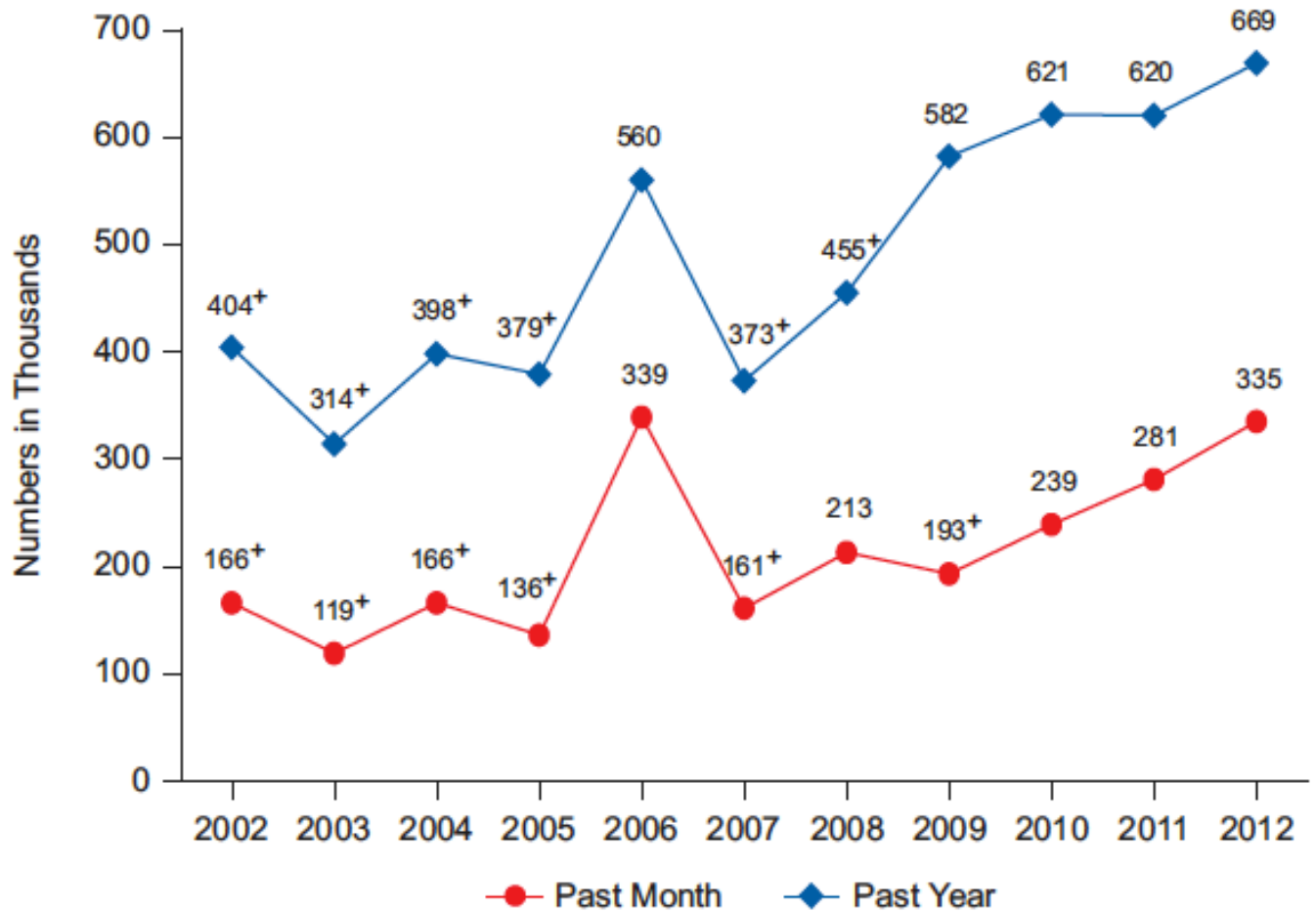
¹ Illicit Drugs include marijuana/hashish, cocaine (including crack), heroin, hallucinogens, inhalants, or prescription-type psychotherapeutics used nonmedically.

Figure 2.2 Past Month Use of Selected Illicit Drugs among Persons Aged 12 or Older: 2002-2012



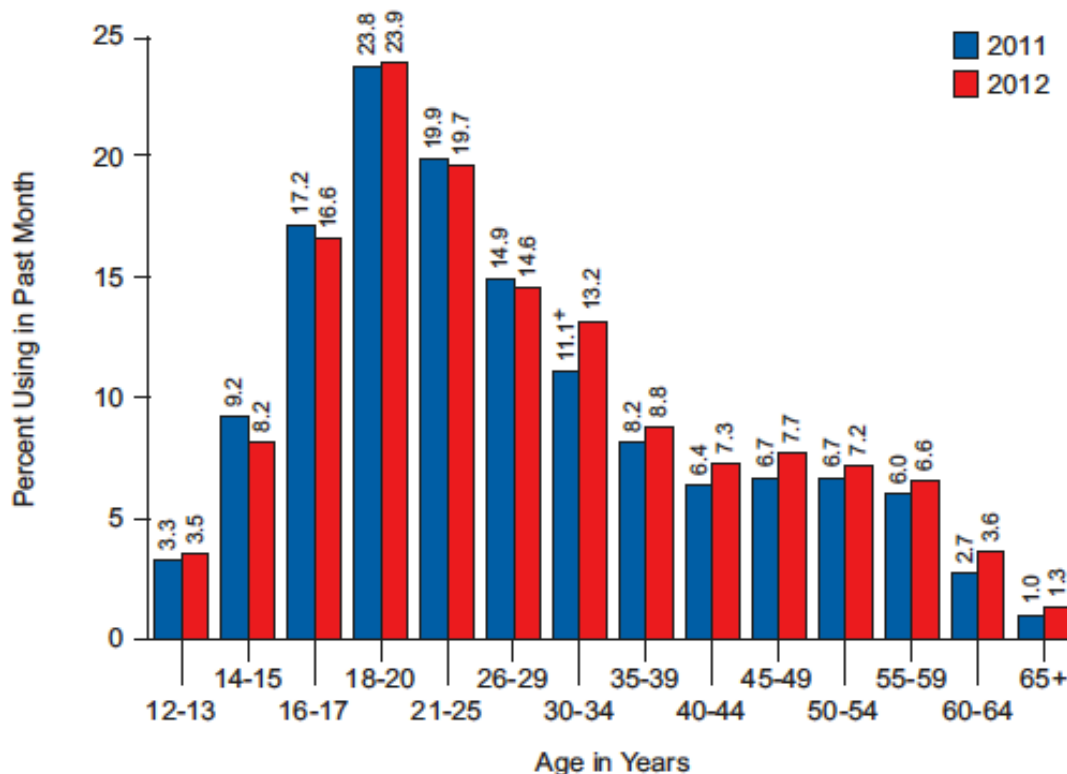
⁺ Difference between this estimate and the 2012 estimate is statistically significant at the .05 level.

Figure 2.4 Past Month and Past Year Heroin Use among Persons Aged 12 or Older: 2002-2012



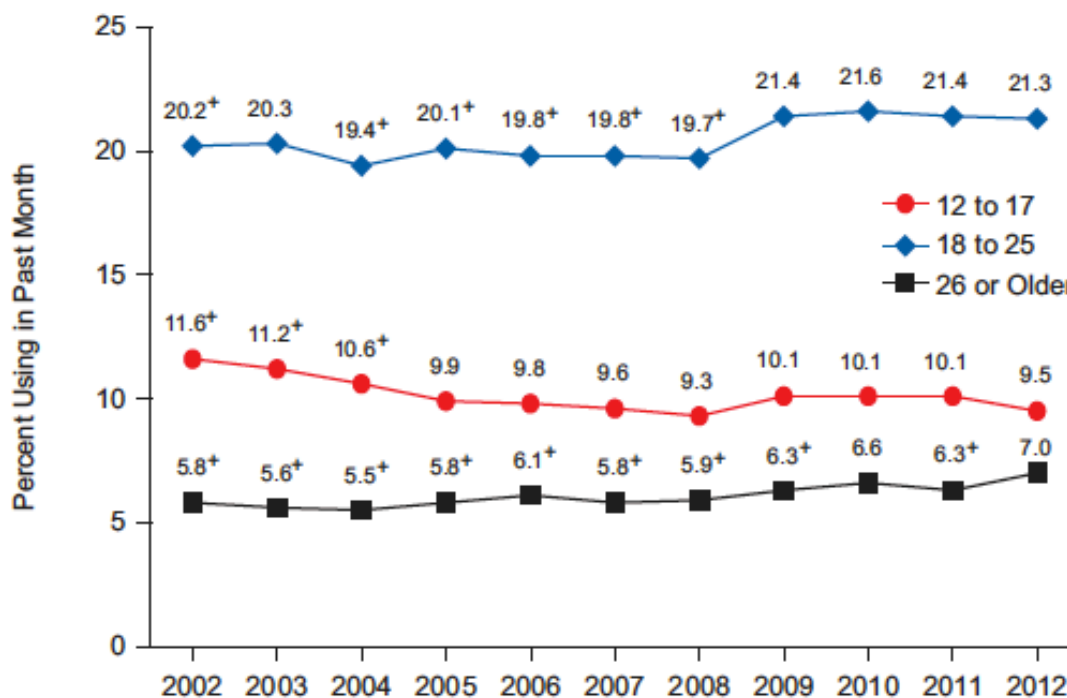
⁺ Difference between this estimate and the 2012 estimate is statistically significant at the .05 level.

Figure 2.5 Past Month Illicit Drug Use among Persons Aged 12 or Older, by Age: 2011 and 2012



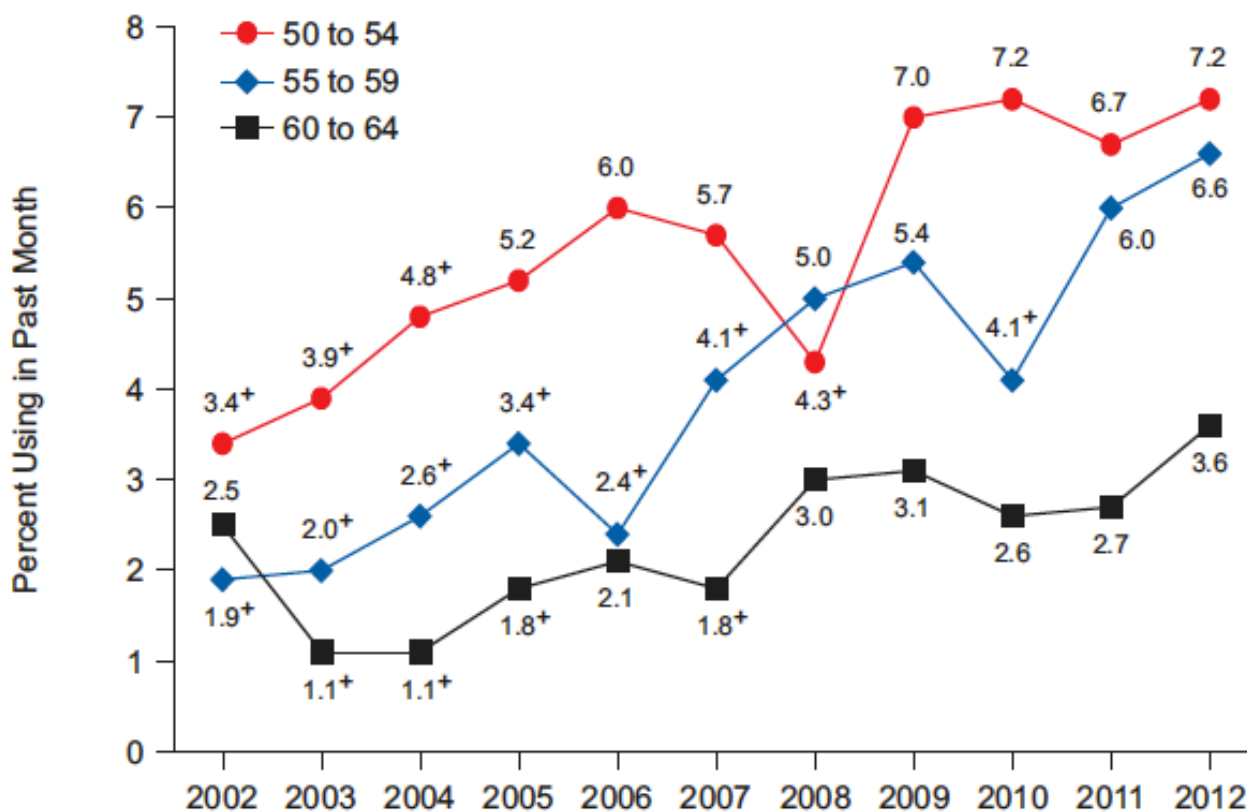
⁺ Difference between this estimate and the 2012 estimate is statistically significant at the .05 level.

Figure 2.6 Past Month Illicit Drug Use among Persons Aged 12 or Older, by Age: 2002-2012



⁺ Difference between this estimate and the 2012 estimate is statistically significant at the .05 level.

Figure 2.10 Past Month Illicit Drug Use among Adults Aged 50 to 64: 2002-2012



⁺ Difference between this estimate and the 2012 estimate is statistically significant at the .05 level.